

Features

- RoHS lead-free-solder and lead-solder-exempted products are available.
- Wide input voltage ranges up to 150 VDC
- 1 or 2 isolated outputs up to 48 V
- 1200 to 3000 VAC I/O electric strength test
- Emissions EN 55022 level A
- Immunity to IEC/EN 61000-4-2,-3,-4,-5, and -6
- High efficiency (typ. 86%)
- Input undervoltage lockout
- Shutdown input, adjustable output voltages
- Flex power: Flexible load distribution on outputs
- Outputs no-load, overload, and short-circuit proof
- Operating ambient temperature -40 to 85 °C
- Thermal protection
- 2" x 1.6" case with 10.5 mm profile
- Supplementary insulation: 20/40IMX15 models
- Double or reinforced insulation: 110IMY15 models

Safety-approved to IEC 60950-1 and UL/CSA 60950-1 2nd Edition



¹ 110IMY15 models

Description

The IMX15, IMS15, and IMY15 Series of board mountable 15-Watt DC-DC converters have been designed according to the latest industry requirements and standards. The converters are particularly suitable for use in mobile or stationary applications in transport, railways, industry, or telecommunications, where variable input voltages or high transient voltages are prevalent.

Covering a total input voltage range from 8.4 up to 150 V with different models, the converters are available with single and electrically-isolated double outputs from 3.3 up to 48 V, externally adjustable, with flexible load distribution on double-output models. A shutdown input allows for remote on/off.

Features include efficient input and output filtering and consistently high efficiency over the entire input voltage range, high reliability, and excellent dynamic response to load and line changes.

The converters have been approved by CSA. 20IMS/20IMX15 and 40IMS/40IMX15 models provide supplementary insulation. Connected to a secondary circuit, these models provide SELV outputs, even if the bus voltage at the converter

input exceeds the SELV-limit of 60 VDC. The 110IMY15 models provide double insulation and are CE marked. They may be connected to a rectified 110 VAC source without any further isolation barrier.

The circuitry is comprised of integrated planar magnetics. All components are automatically assembled and solidly soldered onto a single PCB without any wire connection. Magnetic feedback ensures maximum reliability and repeatability in the control loop over all operating conditions. Careful consideration of possible thermal stress ensures the absence of hot spots providing long life in environments, where temperature cycles are frequent. The thermal design allows operation at full load up to an ambient temperature of 71 °C in free air without using any potting material. For extremely high vibration environments the case has holes for screw mounting.

Table of Contents

| Table of Contents | Page | Page | |
|------------------------------|------|--|----|
| Description | 1 | Electromagnetic Compatibility (EMC) | 14 |
| Model Selection | 2 | Immunity to Environmental Conditions | 16 |
| Functional Description | 4 | Mechanical Data | 17 |
| Electrical Input Data | 5 | Safety and Installation Instructions | 18 |
| Electrical Output Data | 8 | Description of Options | 19 |
| Auxiliary Functions | 13 | | |

Model Selection

Table 1: Model Selection

| Output 1 | | Output 2 | | Output power $P_{o\ nom}$ [W] | Input voltage $V_{i\ min}$ to $V_{i\ max}$ [VDC] | Efficiency | | Model | Options ² |
|-----------------------|-----------------------|-----------------------|-----------------------|----------------------------------|--|-----------------------|-----------------------|-------------------------------|----------------------|
| $V_{o\ nom}$ [VDC] | $I_{o\ nom}^1$ [A] | $V_{o\ nom}$ [VDC] | $I_{o\ nom}^1$ [A] | | | η_{min}^6 [%] | η_{typ}^6 [%] | | |
| 3.3 | 4.5 | - | - | 14.9 | 8.4 to 36 ⁵ | 80 | 82 | 20IMX15-03-8RG ^{SR} | -9, i, Z, -G |
| 3.3 | 4.0 | - | - | 13.2 | 16.8 to 75 ³ | 78 | 80 | 40IMX15-03-8R | i, Z |
| 3.3 | 4.5 | - | - | 14.9 | 16.8 to 75 ³ | 81 | 83 | 40IMX15-03-8RG ^{SR} | -9, i, Z, -G |
| 3.3 | 4.5 | - | - | 14.9 | 50 to 150 ⁴ | 80 | 82 | 110IMY15-03-8RG ^{SR} | i, Z, -G |
| 5.1 | 3.5 | - | - | 17.5 | 8.4 to 36 ⁵ | 83 | 86 | 20IMX15-05-8RG ^{SR} | i, Z, -G |
| 5.1 | 3.5 | - | - | 17.5 | 16.8 to 75 ³ | 85 | 87 | 40IMX15-05-8RG ^{SR} | i, Z, -G |
| 5.1 | 3.5 | - | - | 17.5 | 50 to 150 ⁴ | 79.5 | 82 | 110IMY15-05-8RG ^{SR} | i, Z, -G |
| 5.1 | 2.3 | - | - | 11.7 | 8.4 to 36 ⁵ | 82 | 84 | 20IMX15-05-8R | -9, i, Z |
| 5.1 | 2.7 | - | - | 13.8 | 14 to 36 | 81.5 | 84 | 24IMS15-05-9R | i, Z |
| 5.1 | 2.5 | - | - | 12.8 | 16.8 to 75 ³ | 81.5 | 83 | 40IMX15-05-8R | -9, i, Z |
| 5.1 | 2.7 | - | - | 13.8 | 36 to 75 | 82 | 83 | 48IMS15-05-9R | i, Z |
| 5.1 | 2.5 | - | - | 12.8 | 50 to 150 ⁴ | 78 | 81 | 110IMY15-05-8R | i, Z |
| 5.1 | 1.35 | 3.3 | 1.35 | 11.3 | 8.4 to 36 ⁵ | 82 | 84 | 20IMX15-0503-8R | -9, i, Z, G |
| 5.1 | 1.6 | 3.3 | 1.6 | 13.5 | 14 to 36 | 81 | 83 | 24IMS15-0503-9R | i, Z |
| 5.1 | 1.5 | 3.3 | 1.5 | 12.6 | 16.8 to 75 ³ | 82 | 84 | 40IMX15-0503-8R | -9, i, Z, G |
| 5.1 | 1.6 | 3.3 | 1.6 | 13.5 | 36 to 75 | 79 | 82 | 48IMS15-0503-9R | i, Z |
| 5.1 | 1.5 | 3.3 | 1.5 | 12.6 | 50 to 150 ⁴ | 79 | 82 | 110IMY15-0503-8R | i, Z, G |
| 5 | 1.3 | 5 | 1.3 | 13.0 | 8.4 to 36 ⁵ | 82 | 85 | 20IMX15-05-05-8 | -9, i, R, Z, G |
| 5 | 1.4 | 5 | 1.4 | 14.0 | 14 to 36 | 81 | 84 | 24IMS15-05-05-9 | i, Z |
| 5 | 1.4 | 5 | 1.4 | 14.0 | 16.8 to 75 ³ | 81 | 84 | 40IMX15-05-05-8 | -9, i, R, Z, G |
| 5 | 1.4 | 5 | 1.4 | 14.0 | 36 to 75 | 81 | 83 | 48IMS15-05-05-9 | i, Z |
| 5 | 1.4 | 5 | 1.4 | 14.0 | 50 to 150 ⁴ | 80 | 82 | 110IMY15-05-05-8 | i, Z, G |
| 12 | 0.65 | 12 | 0.65 | 15.6 | 8.4 to 36 ⁵ | 83 | 86 | 20IMX15-12-12-8 | -9, i, Z, G |
| 12 | 0.7 | 12 | 0.7 | 16.8 | 14 to 36 | 83 | 86 | 24IMS15-12-12-9 | i, Z |
| 12 | 0.7 | 12 | 0.7 | 16.8 | 16.8 to 75 ³ | 84 | 87 | 40IMX15-12-12-8 | -9, i, R, Z, G |
| 12 | 0.7 | 12 | 0.7 | 16.8 | 36 to 75 | 82 | 86 | 48IMS15-12-12-9 | i, Z |
| 12 | 0.7 | 12 | 0.7 | 16.8 | 50 to 150 ⁴ | 82 | 85 | 110IMY15-12-12-8 | i, Z, G |
| 15 | 0.5 | 15 | 0.5 | 15.0 | 8.4 to 36 ⁵ | 85 | 88 | 20IMX15-15-15-8 | -9, i, R, Z, G |
| 15 | 0.56 | 15 | 0.56 | 16.8 | 14 to 36 | 83 | 86 | 24IMS15-15-15-9 | i, Z |
| 15 | 0.56 | 15 | 0.56 | 16.8 | 16.8 to 75 ³ | 83 | 86 | 40IMX15-15-15-8 | -9, i, R, Z, G |
| 15 | 0.56 | 15 | 0.56 | 16.8 | 36 to 75 | 84 | 86 | 48IMS15-15-15-9 | i, Z |
| 15 | 0.56 | 15 | 0.56 | 16.8 | 50 to 150 ⁴ | 82 | 85 | 110IMY15-15-15-8 | i, Z, G |
| 24 | 0.32 | 24 | 0.32 | 15.4 | 8.4 to 36 ⁵ | 83 | 86 | 20IMX15-24-24-8 | -9, i, R, Z, G |
| 24 | 0.35 | 24 | 0.35 | 16.8 | 14 to 36 | 84 | 87 | 24IMS15-24-24-9 | i, Z |
| 24 | 0.35 | 24 | 0.35 | 16.8 | 16.8 to 75 ³ | 84 | 86 | 40IMX15-24-24-8 | -9, i, R, Z, G |
| 24 | 0.35 | 24 | 0.35 | 16.8 | 36 to 75 | 83 | 86 | 48IMS15-24-24-9 | i, Z |
| 24 | 0.35 | 24 | 0.35 | 16.8 | 50 to 150 ⁴ | 82 | 85 | 110IMY15-24-24-8 | i, Z, G |

¹ Flexible load distribution on dual and double outputs possible; up to 75% of the total output power $P_{o\ nom}$ on one of the 2 outputs. IMX/IMY15-0503 models have reduced load distribution flexibility; 1.8 A max. on one of the 2 outputs. The other output should not exceed the difference to the total output power $P_{o\ nom}$.

² See Description of Options.

³ Short-time operation down to $V_i = 14.4$ V possible (P_o reduced to approx. 85% of $P_{o\ nom}$)

⁴ Short-time operation down to $V_i = 43.2$ V possible (P_o reduced to approx. 85% of $P_{o\ nom}$) and up to 154 V

⁵ Initial start-up at 9 V, main output voltage regulation down to 8.4 V

⁶ Efficiency at $T_A = 25$ °C, $V_{i\ nom}$, $I_{o\ nom}$.

^{SR} Models with synchronous rectifier. For the RoHS version of such models, add -G !

Preferred for new designs

NFND Not for new designs.

Replace 24IMS15 models by 20IMX15 and 48IMS15 by 40IMX15;

Replace 20IMS15-05, 40IMS15-05, and 110IMY15 by models with synchronous rectifier^{SR};

For new designs, choose always the RoHS version.

RoHS-Compliant Models

The type designation of RoHS-compliant models (compliant for the restriction of all six substances) for the IMX/IMY15 Series ends with "G".

However, in single-output models with 3.3 V or 5.1 V output an extra hyphen (-) is added after the existing "G", which already signifies a synchronous rectifier. This is an exception to Power-One's normal nomenclature to identify this type of product, since G is already used to designate products for higher output current fitted with a synchronous rectifier. As an example

- 20IMX15-05-8R-G means a standard version with RoHS compliance for all six substances.
- 20IMX15-05-8RG means a synchronous rectifier version which is not RoHS-compliant.
- 20IMX15-05-8RG-G means a synchronous rectifier version and with RoHS compliance for all six substances.
- 20IMX15-05-05-8RG means a double-output model with RoHS compliance for all six substances
- 110IMY15-24-24-8RG means a double-output model with RoHS compliance for all six substances.

Part Number Description

| | |
|---|---------------------------------------|
| <p>Input voltage range V_i</p> <p>8.4 to 36 V 20</p> <p>14 to 36 V 24</p> <p>16.8 to 75 V 40</p> <p>36 to 75 V 48</p> <p>50 to 150 V 110</p> <p>Series IMX15, IMS15, IMY15</p> <p>Output voltage of output 1 03, 05, 12, 15, 24</p> <p>Hyphen designating double-output models with two electrically isolated outputs -¹</p> <p>Output voltage of output 2 03, 05, 12, 15, 24</p> <p>Operating ambient temperature range T_A</p> <p>-40⁵ to 85 °C -8</p> <p>-40⁵ to 71 °C -9²</p> <p>Options and features:</p> <p>R input and magnetic feedback R³</p> <p>Synchronous rectification G</p> <p>Inhibit i⁴</p> <p>Open frame Z</p> <p>RoHS compliant for all 6 substances -G</p> | <p>40 IMX15 -05 -05 -8 R G i Z -G</p> |
|---|---------------------------------------|

¹ Not applicable to -0503 models.

² IMS15 models are not recommended for new designs.

³ Standard for single-output and -0503- models, not for new designs of other models

⁴ Option i excludes shutdown.

⁵ Only -25 °C for -RG models

Note: The sequence of options must follow the order above.

Examples: 20IMX15-05-05-8: DC-DC converter, input voltage 9 to 36 V, 2 galvanically isolated outputs each providing 5 V, 1.3 A.

110IMY15-0503-8R: DC-DC converter, input voltage 50 to 150 V, 2 outputs with common return providing +5.1 V, 1.5 A and +3.3 V, 1.5 A. Converter fitted with magnetic feedback for tight output voltage regulation.

Product Marking

The converters without option Z are marked with basic type designation, input and output voltages and currents, applicable safety approval and recognition marks, Power-One patent nos., company logo, date code, and serial number.

Functional Description

The IMX15/IMS15/IMY15 Series of DC-DC converters are magnetic feedback-controlled flyback converters using current mode PWM (Pulse Width Modulation). The -05- and -0503-output voltage models, as well as all double-output models fitted with option R, exhibit an active magnetic feedback loop via a pulse transformer, resulting in very tight regulation of the output voltage (see the block diagrams). The output voltages of these models can be adjusted via the R input. The R input is referenced to the secondary side and allows for programming the output voltages in the range of approximately 80 to 105% of $V_{o\ nom}$, using either an external resistor or an external voltage source.

Several single-output models with 3.3 or 5.1 V output exhibit a synchronous rectifier to improve the efficiency.

The voltage regulation on the double-output models without option R is achieved with a passive transformer feedback from the main transformer (see fig. 3). The output voltages can be adjusted via the Trim input. The Trim input is referenced to the primary side and allows for programming the output voltage in the range 100 to 105% of $V_{o\ nom}$ via an external resistor or within 75 to 105% using an external voltage source. The load regulation output characteristic allows for paralleling of one or more double-output models with equal output voltage.

Current limitation is provided by the primary circuit, thus limiting the total output power of double-output models. The shut-down input allows remote converter on/off.

Overtemperature protection will disable the converter under excessive overload conditions with automatic restart.

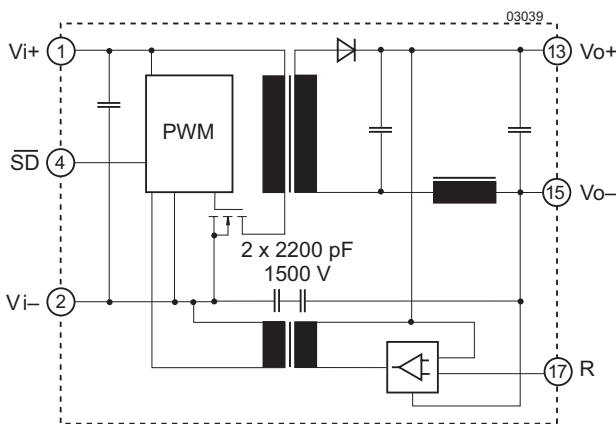


Fig. 1
Block diagram of single-output models

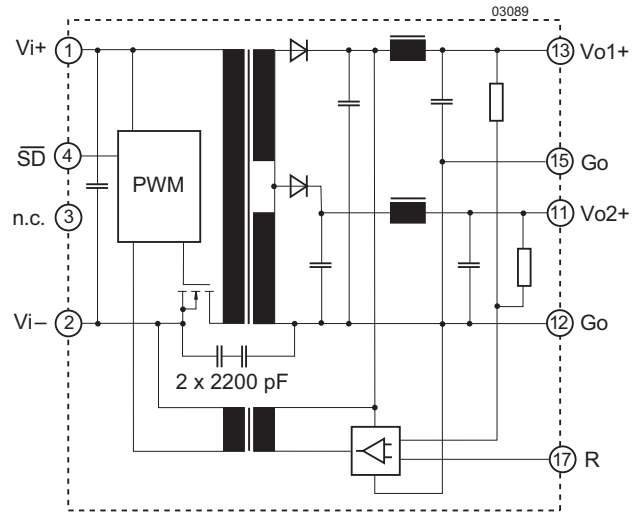


Fig. 2
Block diagram of -0503-models

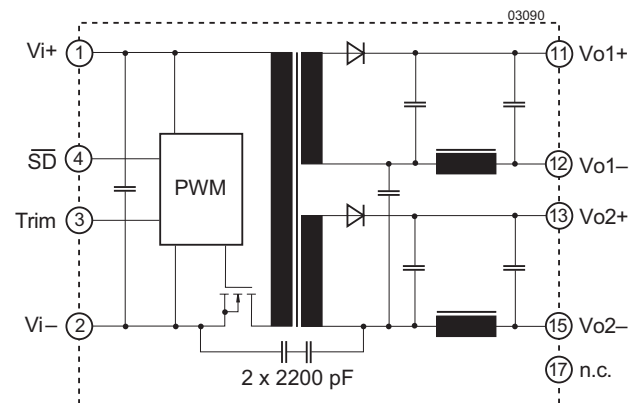


Fig. 3
Block diagram of double-output models

Electrical Input Data

General conditions:

- $T_A = 25\text{ }^\circ\text{C}$, unless T_C is specified.
- Shut-down pin left open-circuit.
- Trim or R input left open-circuit.

Table 2a: Input data of IMX15 and IMY15 models

| Input | | | 20IMX | | | 40IMX | | | 110IMY | | | Unit |
|----------------------------|--------------------------------------|--|--|-----|----------------|---------------------|----------------|-----|-------------------|-----|-----|------------------|
| Characteristics | | Conditions | min | typ | max | min | typ | max | min | typ | max | |
| V_i | Input voltage range ¹ | $T_{A\text{ min}} - T_{A\text{ max}}$ | 9.5 ⁸ | | 36 | 16.8 ^{5,6} | | 75 | 50 ^{5,7} | | 150 | V |
| $V_{i\text{ nom}}$ | Nominal input voltage | $I_o = 0 - I_{o\text{ nom}}$ | | 20 | | | 40 | | | 110 | | |
| $V_{i\text{ sur}}$ | Repetitive surge voltage | Abs. max input (3 s) | | | 40 | | | 100 | | | 168 | |
| t_{startup} | Converter start-up time ² | Switch on | Worst case condition at | | 0.25 | 0.5 | 0.25 | 0.5 | 0.5 | 0.7 | | s |
| | | $\overline{\text{SD}}$ high | $V_{i\text{ min}}, I_o = I_{o\text{ nom}}$ | | 0.1 | | 0.1 | | 0.1 | | | |
| t_{rise} | Rise time ² | $V_{i\text{ nom}}$, resistive load | 5 | | 5 | | 5 | | | | | ms |
| | | $I_{o\text{ nom}}$, capac. load | 10 20 | | 10 20 | | 10 20 | | | | | |
| $I_{i\text{ o}}$ | No-load input current | $I_o = 0, V_{i\text{ min}} - V_{i\text{ max}}$ | 65 | | 45 | | 15 | | | | | mA |
| I_{irr} | Reflected ripple current | $I_o = 0 - I_{o\text{ nom}}$ | 30 | | 30 | | 20 | | | | | mA _{pp} |
| $I_{\text{inr.p}}$ | Inrush peak current ³ | $V_i = V_{i\text{ nom}}$ | 8 | | 9 | | 10 | | | | | A |
| C_i | Input capacitance | for surge calculation | 1.5 | | 0.75 | | 0.35 | | | | | μF |
| $V_{\overline{\text{SD}}}$ | Shut-down voltage | Converter disabled | -10 to 0.7 | | -10 to 0.7 | | -10 to 0.7 | | | | | V |
| | | Converter operating | open or 2 – 20 | | open or 2 – 20 | | open or 2 – 20 | | | | | |
| $R_{\overline{\text{SD}}}$ | Shut-down input resistance | | approx. 10 | | approx. 10 | | approx. 10 | | | | | kΩ |
| $I_{\overline{\text{SD}}}$ | Input current, when disabled | $V_{i\text{ min}} - V_{i\text{ max}}$ $\overline{\text{SD}}$ connected to Vi- | 10 | | 3 | | 1 | | | | | mA |
| f_s | Switching frequency | $V_{i\text{ min}} - V_{i\text{ max}}$, $I_o = 0 - I_{o\text{ nom}}$ | approx. 300 | | approx. 300 | | approx. 300 | | | | | kHz |
| $V_{i\text{ RFI}}$ | Input RFI level conducted | EN 55022 ⁴ | A | | A | | A | | | | | |

¹ If V_o is set above $V_{o\text{ nom}}$ by use of the R or Trim input, $V_{i\text{ min}}$ will be proportionately increased.

² Measured with resistive and max. admissible capacitive load. Valid for models with rev. A1 or greater.

³ Source impedance according to ETS 300132-2, version 4.3.

⁴ Measured with a ceramic capacitor C_i directly across input; output lead length 0.1 m, leads twisted. Double-output models with both outputs in parallel. C_i is specified in table 11.

⁵ Input undervoltage lockout at typ. 80% of $V_{i\text{ min}}$.

⁶ Short time operation down to $V_{i\text{ min}} > 14.4\text{ V}$ possible. P_o reduced to approx. 85% of $P_{o\text{ nom}}$.

⁷ Short time operation down to $V_{i\text{ min}} > 43.2\text{ V}$ possible. P_o reduced to approx. 85% of $P_{o\text{ nom}}$.

⁸ Initial start-up at $V_i = 9\text{ V}$, main output voltage regulation down to 8.4 V

Table 2b: Input Data of IMS15 models; general conditions as in table 2a

| Input | | | 24IMS | | | 48IMS | | | Unit | |
|---------------------|--------------------------------------|----------------------|---|-----|----------------|-------|----------------|------|------------|----|
| Characteristics | | Conditions | min | typ | max | min | typ | max | | |
| V_i | Input voltage range ¹ | | $T_{A\ min} - T_{A\ max}$ | | 14 | 36 | | 36 | 75 | V |
| $V_{i\ nom}$ | Nominal input voltage | | $I_o = 0 - I_{o\ nom}$ | | 24 | | 48 | | | |
| $V_{i\ sur}$ | Repetitive surge voltage | | Abs. max input (3 s) | | 50 | | 100 | | | |
| $t_{startup}$ | Converter start-up time ² | Switch on | Worst case condition at | | 0.25 | 0.5 | | 0.25 | 0.5 | s |
| | | \overline{SD} high | $V_{i\ min}, I_o = I_{o\ nom}$ | | 0.1 | | 0.1 | | | |
| t_{rise} | Rise time ² | | $V_{i\ nom}$, resistive load | | 5 | | 5 | | ms | |
| | | | $I_{o\ nom}$, capac. load | | 10 | 20 | 10 | 20 | | |
| $I_{i\ o}$ | No-load input current | | $I_o = 0, V_{i\ min} - V_{i\ max}$ | | 20 | 40 | | 10 | 20 | mA |
| I_{irr} | Reflected ripple current | | $I_o = 0 - I_{o\ nom}$ | | 30 | | 30 | | mA_{pp} | |
| I_{inrp} | Inrush peak current ³ | | $V_i = V_{i\ nom}$ | | 5 | | 4.5 | | A | |
| C_i | Input capacitance | | for surge calculation | | 4 | | 2 | | μF | |
| $V_{\overline{SD}}$ | Shut-down voltage | | Converter disabled | | -10 to 0.7 | | -10 to 0.7 | | V | |
| | | | Converter operating | | open or 2 - 20 | | open or 2 - 20 | | | |
| $R_{\overline{SD}}$ | Shut-down input resistance | | | | approx. 10 | | approx. 10 | | k Ω | |
| $I_{\overline{SD}}$ | Input current, when disabled | | $V_{i\ min} - V_{i\ max}$ \overline{SD} connected to Vi- | | 1.2 | 3 | | 1.2 | 3 | mA |
| f_s | Switching frequency | | $V_{i\ min} - V_{i\ max},$ $I_o = 0 - I_{o\ nom}$ | | approx. 300 | | approx. 300 | | kHz | |
| V_{IRFI} | Input RFI level conducted | | EN 55022 ⁴ | | A | | A | | | |

¹ If V_o is set above $V_{o\ nom}$ by use of the R or Trim input, $V_{i\ min}$ will be proportionately increased.

² Measured with resistive and max. admissible capacitive load.

³ Source impedance according to ETS 300132-2, version 4.3.

⁴ Measured with a ceramic capacitor C_i directly across input; output lead length 0.1 m, leads twisted. Double-output models with both outputs in parallel. C_i is specified in table 11.

⁵ Input undervoltage lockout at typ. 80% of $V_{i\ min}$.

Inrush Current

The inrush current has been made as low as possible by choosing a very small input capacitance. A series resistor may be installed in the input line to further reduce this current.

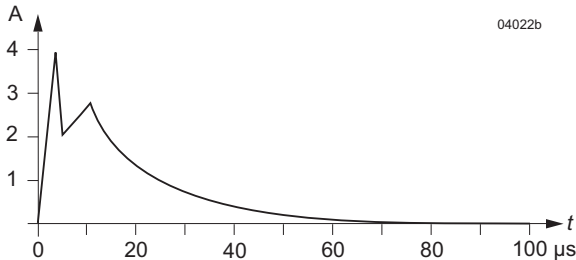


Fig. 4
Typical inrush current at $V_{i\text{ nom}}$, $P_{o\text{ nom}}$ versus time (40IMX15). Source impedance according to ETS 300132-2 at $V_{i\text{ nom}}$.

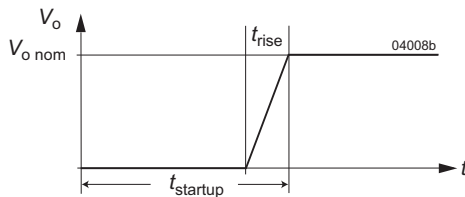


Fig. 5
Converter start-up and rise time

Input Undervoltage Lockout

A special feature of these converters is the accurate undervoltage lockout protection, which protects against large currents caused by operation at low voltages. This ensures easier start-up in distributed power systems.

Tab. 3: Turn on and turn off voltage

| Model | Turn on | | Turn off | | Unit |
|----------|---------|------|----------|------|------|
| | min | max | min | max | |
| 20IMX15 | 7.5 | 8 | 7 | 7.5 | V |
| 24IMS15 | 12.5 | 13.5 | 12 | 13 | |
| 40IMX15 | 12.5 | 13.5 | 12 | 13 | |
| 48IMS15 | 31.5 | 32.5 | 31 | 32 | |
| 110IMY15 | 40 | 42.5 | 38 | 40.5 | |

Fuse and Reverse Polarity Protection

The built-in suppressor diode also provides for reverse polarity protection at the input by conducting current in the reverse direction. An external fuse is required to limit this current.

Table 4: Recommended external fuses

| Model | Fuse type |
|------------------|-----------|
| 20IMX15 | F 4.0 A |
| 24IMS15 | F 3.15 A |
| 40IMX15, 48IMS15 | F 2.0 A |
| 110IMY15 | F 1.0 A |

Input Transient Voltage Protection

A built-in suppressor diode provides effective protection against input transients, which typically occur in many installations.

Table 5: Built-in transient voltage suppressor

| Type | Breakdown voltage $V_{Br\text{ nom}}$ [V] | Peak power at 1 ms P_p [W] | Peak pulse current I_{pp} [A] |
|----------|---|------------------------------|---------------------------------|
| 20IMX15 | 40 | 1500 | 22 |
| 24IMS15 | 53 | 600 | 7.7 |
| 40IMX15 | 100 | 1500 | 9.7 |
| 48IMS15 | 100 | 600 | 4.1 |
| 110IMY15 | 168 | 600 | 0.5 |

For very high energy transients as for example to achieve compliance to IEC/EN 61000-4-5 or ETR 283 (see table *Electromagnetic Immunity*), an external inductor and a capacitor are required, see Fig. 6. The components should have similar characteristics as listed in table 6.

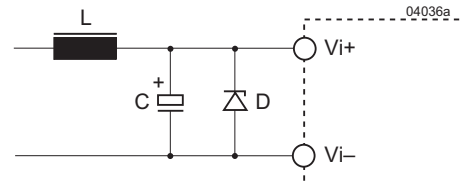


Fig. 6
Example for external circuitry to achieve better transient immunity. The diode D is only necessary for 20IMX15 models.

Table 6:
Components for external circuitry for IEC/EN 61000-4-5, level 3, or ETR 283 (19Pfl1) compliance.

| Model | Inductor (L) | Capacitor (C) | Diode (D) |
|----------|--------------------|------------------------|------------|
| 20IMX15 | 68 μ H, 2.7 A | 330 μ F, 63 V | 1.5 k E47A |
| 24IMS15 | 150 μ H, 1.3 A | 150 μ F, 63 V | - |
| 40IMX15 | 220 μ H, 1.3 A | 2 x 100 μ F, 100 V | - |
| 48IMS15 | 150 μ H, 1 A | 100 μ F, 100 V | - |
| 110IMY15 | 330 μ H, 0.4 A | 2 x 100 μ F, 200 V | - |

Electrical Output Data

We recommend connecting an external 1 μ F ceramic capacitor across the output pins.

General conditions:

- $T_A = 25^\circ\text{C}$, unless T_C is specified
- Shutdown pin and Trim or R pin left open-circuit (not connected)

Table 7a: Output data for single-output models -03-8RG¹ and 05-8RG¹

| Output | | Conditions | 3.3 V | | | 5.1 V | | | Unit |
|--------------------|--|--|---|-----|------------|-------|-----|------------|------------------|
| Characteristics | | | min | typ | max | min | typ | max | |
| V_o | Output voltage | $V_{i\text{ nom}}$ $I_o = 0.5 I_{o\text{ nom}}$ | 3.25 | | 3.35 | 5.05 | | 5.15 | V |
| $I_{o\text{ nom}}$ | Output current | $V_{i\text{ min}}$ to $V_{i\text{ max}}$ | | 4.5 | | | 3.5 | | A |
| | 20IMX 40IMX/110IMY | | | 4.5 | | | 3.5 | | |
| I_{oL} | Current limit ² | $V_{i\text{ nom}}, T_C = 25^\circ\text{C}$ $V_o \leq 93\% V_{o\text{ nom}}$ | | 6.0 | | | 4.6 | | |
| ΔV_o | Line/load regulation | $V_{i\text{ min}}$ to $V_{i\text{ max}}$, (0.1 to 1) $I_{o\text{ nom}}$ | | | ± 0.5 | | | ± 0.5 | % |
| V_o | Output voltage noise | $V_{i\text{ min}}$ to $V_{i\text{ max}}$ $I_o = I_{o\text{ nom}}$ | | | 100 | | | 100 | mV _{pp} |
| | | | | | 60 | | | 60 | |
| V_{oL} | Output overvoltage limit. ³ | | 115 | | 130 | 115 | | 130 | % |
| $C_{o\text{ ext}}$ | Admissible capacitive load | | 0 | | 4000 | 0 | | 4000 | μF |
| $V_{o\text{ d}}$ | Dynamic load regulation | Voltage deviat. | $V_{i\text{ nom}}$ | | ± 250 | | | ± 250 | mV |
| t_d | | Recovery time | $I_{o\text{ nom}} \leftrightarrow 1/2 I_{o\text{ nom}}$ IEC/EN 61204 | | | 1 | | | 1 |
| α_{V_o} | Temperature coefficient $\Delta V_o / \Delta T_C$ | $V_{i\text{ min}}$ to $V_{i\text{ max}}$ (0.1 to 1) $I_{o\text{ nom}}$ | | | ± 0.02 | | | ± 0.02 | %/K |

¹ All models -RG (synchronous rectifier) have a minimum case and operating temperature of -25°C .

² The current limit is primary side controlled. In the event of a sustained overload condition the thermal protection may cause the converter to shut down (restart after cooling down).

³ The overvoltage protection is via a primary side second regulation loop. It is not tracking with R control.

⁴ BW = 20 MHz

⁵ Measured with a probe according to EN 61204

Table 7b: Output data for -05-8R and -0503-8R models; general conditions as in table 7a

| Output | | | 5.1 V | | | 5.1/3.3 V | | | Unit |
|--------------------------------|--|--|---|-----|-------|-------------|--------|-------------------|------------------|
| Characteristics | | Conditions | min | typ | max | min | typ | max | |
| V_{O1}, V_{O1} V_{O2} | Output voltage | $V_{i\text{nom}}$ $I_o = 0.5 I_{o\text{nom}}$ | 5.05 | | 5.15 | 5.0 3.13 | | 5.12 3.46 | V |
| $I_{o\text{nom}}$ | Output current ¹ | 20IMX | | 2.3 | | 2 × 1.35 | | 1.6 ⁴ | A |
| | | 24IMS/48IMS | | 2.7 | | 2 × 1.6 | | 2.0 ⁴ | |
| | | 40IMX/110IMY | | 2.5 | | 2 × 1.5 | | 1.8 ⁴ | |
| I_{oL}, I_{o1L} I_{o2L} | Current limit ² 20IMX | $V_{i\text{nom}}$ $V_{O1} \leq 93\% V_{o\text{nom}}$ | 3.2 | | 2.7 | | 3.8 | | |
| | | | 3.5 | | 3.0 | | 3.8 | | |
| I_{oL}, I_{o1L} I_{o2L} | 24IMS/48IMS | | 3.6 | | 2.9 | | 4.0 | | |
| ΔV_o | Line/load regulation | $V_{i\text{min}} - V_{i\text{max}}$, $(0.1 - 1) I_{o\text{nom}}$ | 5.1 V | | ±0.5 | | - | | % |
| | | | 5.1 V | | - | | +3, -5 | | |
| | | | 3.3 V | | - | | ±4.5 | | |
| $V_{O1/2}$ | Output voltage noise | $V_{i\text{min}} - V_{i\text{max}}$ $I_o = I_{o\text{nom}}$ | 5 | | 70 | | 80 | | mV _{pp} |
| | | | 6 | | 40 | | 40 | | |
| V_{oL} | Output overvoltage limit ⁷ | | 115 | | 130 | 115 | | 130 | % |
| $C_{o\text{ext}}$ | Admissible capacitive load | | 0 | | 4000 | 0 | | 4000 ³ | µF |
| $V_{o\text{d}}$ | Dynamic load regulation | Voltage deviat. | $V_{i\text{nom}}$ | | ±250 | | ±150 | | mV |
| t_d | | Recovery time | $I_{o\text{nom}} \leftrightarrow 1/2 I_{o\text{nom}}$ IEC/EN 61204 | | 1 | | 1 | | ms |
| α_{V_o} | Temperature coefficient $\Delta V_o / \Delta T_C$ | $V_{i\text{min}} - V_{i\text{max}}$ $(0.1 - 1) I_{o\text{nom}}$ | | | ±0.02 | | ±0.02 | | %/K |

- 1 Flexible load distribution: I_o max for one of the 2 outputs; however the total load should not exceed $P_{o\text{nom}}$ specified in the table *Model Selection*.
- 2 The current limit is primary-side controlled.
- 3 For -0503-models: total capacitive load of both outputs.
- 4 For -0503-models: Conditions for specified output. Other output loaded with constant current $I_o = 0.5 I_{o\text{nom}}$.
- 5 BW = 20 MHz
- 6 Measured with a probe according to EN 61204
- 7 The overvoltage protection is via a primary side second regulation loop. It is not tracking with R control.

Table 7c: Output data for double-output models; general conditions as in table 7a

| Output | | | | 2 × 5 V | | 2 × 12 V | | 2 × 15 V | | 2 × 24 V | | Unit | |
|--------------------|---|-----------------|--|---------|------|----------|-------|----------|-------|----------|-------|------------------|--|
| Characteristics | | | Conditions | min | typ | max | min | typ | max | min | typ | max | |
| V _{o1} | Output 1 | 24IMS/48IMS | V _{i nom} I _o = 0.5 I _{o nom} | 4.95 | 5.05 | 11.88 | 12.12 | 14.85 | 15.15 | 23.70 | 24.30 | V | |
| | | other models | | 4.95 | 5.05 | 11.90 | 12.10 | 14.88 | 15.12 | 23.80 | 24.20 | | |
| V _{o2} | Output 2 | 24IMS/48IMS | V _{i nom} I _o = 0.5 I _{o nom} | 4.94 | 5.06 | 11.84 | 12.16 | 14.80 | 15.20 | 23.64 | 24.36 | V | |
| | | other models | | 4.94 | 5.06 | 11.88 | 12.12 | 14.85 | 15.15 | 23.75 | 24.25 | | |
| I _{o nom} | Output current ¹ | 20IMX | V _{i min} – V _{i max} | 2 × 1.3 | | 2 × 0.65 | | 2 × 0.50 | | 2 × 0.32 | | A | |
| | | other models | | 2 × 1.4 | | 2 × 0.70 | | 2 × 0.56 | | 2 × 0.35 | | | |
| I _{oL} | Current limit ^{2,4} | 20IMX | V _{i nom} V _{o1} ≤ 93% V _{o nom} | 3.0 | | 1.6 | | 1.3 | | 0.85 | | | |
| | | 24IMS/48IMS | | 3.5 | | 1.9 | | 1.6 | | 0.95 | | | |
| | | 40IMX/110IMY | | 3.2 | | 1.7 | | 1.4 | | 0.90 | | | |
| ΔV _{o1} | Line/load regulation | output 1 | V _{i min} – V _{i max} , I _{o nom} | ±1 | | ±1 | | ±1 | | ±1 | | % | |
| ΔV _{o2} | | output 2 | V _{i nom} , (0.1 – 1) I _{o nom} | ±3 | | ±3 | | ±3 | | ±3 | | | |
| V _{o1/2} | Output voltage noise | | V _{i min} – V _{i max} I _o = I _{o nom} | 80 | | 120 | | 150 | | 240 | | mV _{pp} | |
| | | | | 40 | | 60 | | 70 | | 120 | | | |
| V _{oL} | Output overvoltage limit ⁷ | | Min. load 1% | 115 | 130 | 115 | 130 | 115 | 130 | 115 | 130 | % | |
| C _{o ext} | Admissible capacitive load ³ | | | 0 | 4000 | 0 | 680 | 0 | 470 | 0 | 180 | μF | |
| V _{o d} | Dynamic load regulation | Voltage deviat. | V _{i nom} I _{o nom} ↔ 1/2 I _{o nom} | ±250 | | ±300 | | ±300 | | ±600 | | mV | |
| t _d | | Recovery time | | 1 | | 1 | | 1 | | 1 | | ms | |
| α _{Uo} | Temperature coefficient ΔV _o /ΔT _C | | V _{i min} – V _{i max} (0.1 – 1) I _{o nom} | ±0.02 | | ±0.02 | | ±0.02 | | ±0.02 | | %/K | |

¹ Flexible load distribution: Each output of double-output models is capable of delivering 75% of the total output power; however the total load should not exceed P_{o nom} specified in the table *Model Selection*.

² The current limit is primary-side controlled.

³ Measured with both outputs connected in parallel.

⁴ Conditions for specified output. Other output loaded with constant current I_o = 0.5 I_{o nom}.

⁵ BW = 20 MHz

⁶ Measured with a probe according to EN 61204

⁷ The overvoltage protection is via a primary side second regulation loop, not tracking with Trim or R control.

Thermal Considerations

If a converter, mounted on a PCB, is located in free, quasi-stationary air (convection cooling) at the indicated maximum ambient temperature $T_{A\max}$ (see table *Temperature specifications*) and is operated at its nominal input voltage and output power, the case temperature measured at the measuring point of case temperature T_C (see *Mechanical Data*) will approach the indicated value $T_{C\max}$ after the warm-up phase. However, the relationship between T_A and T_C depends heavily on the conditions of operation and integration into a system. The thermal conditions are influenced by input voltage, output current, airflow, temperature of surrounding components and surfaces, and the properties of the printed circuit board. $T_{A\max}$ is therefore only an indicative value.

Caution: The case temperature T_C measured at the measuring point of case temperature T_C (see *Mechanical Data*) may under no circumstances exceed the specified maximum value. The installer must ensure that under all operating conditions T_C remains within the limits stated in the table *Temperature specifications*.

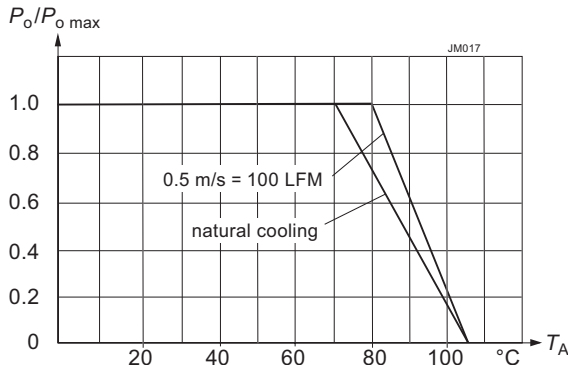


Fig. 7
Maximum output power versus ambient temperature

Overtemperature Protection

The converters are protected from possible overheating by means of an internal temperature monitoring circuit. It shuts down the converter above the internal temperature limit, and attempts to automatically restart in short intervals. This feature helps protect against excessive internal temperatures, which could occur during heavy overload conditions.

Output Overvoltage Protection

The output of single-output models as well as -0503- and -05-05-models are protected against overvoltage by a second control loop. In the event of an overvoltage on one of the outputs, the converter will shut down and attempt to restart in short intervals.

Double-output models (except -0503- and -05-05-models) are protected against overvoltage by a Zener diode across the second output. Under worst case conditions the Zener diode will become a short circuit. Since with double-output models both outputs track each other, the protection diode is only provided in one of the outputs. The main purpose of this feature is to protect against possible overvoltage, which could occur due to a failure in the control logic. This protection circuit is not designed to withstand externally applied overvoltages.

Short Circuit Behaviour

The current limit characteristic shuts down the converter, whenever a short circuit is applied to its output. It acts self-protecting, and automatically recovers after removal of the overload condition (hiccup mode).

Parallel and Series Connection

The outputs of one or several single- or double-output

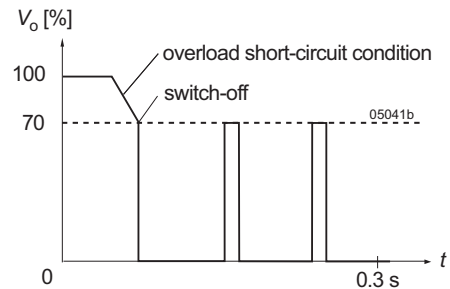


Fig. 8
Overload switch-off (hiccup mode); typical values

models can be connected in series without any precautions, taking into consideration that the highest output voltage should remain below 42 V to ensure that the output remains SELV.

Both outputs of the same converter with equal voltage (e.g. 5 V / 5 V) can be connected in parallel and will share their output currents equally. Parallel operation of single or double outputs of two or more converters with the same output voltage may cause start-up problems at initial start-up. This is only advisable in applications, where one converter is able to deliver the full load current as, for example, required in true redundant systems.

Note: If the 2nd output of double-output models (except 0503) is not used, connect it in parallel to the 1st output.

Typical Performance Curves

General conditions:

- $T_A = 25\text{ °C}$, unless T_C is specified.
- Shutdown pin left open-circuit.
- Trim or R input not connected.

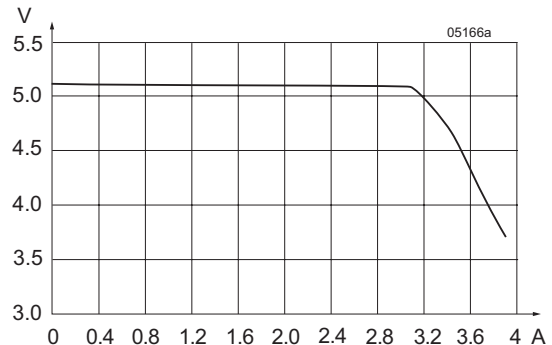


Fig. 9
 V_o versus I_o (typ) of converters with $V_o = 5.1\text{ V}$
(110IMY15-05-8R)

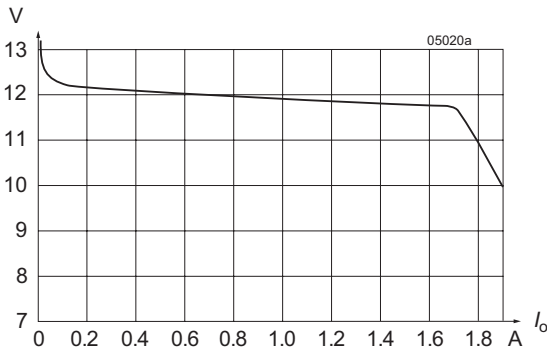


Fig. 10
V_o versus I_o (typ.) of double-output models (2 x 12 V), with both outputs in parallel (110IMY15-12-12-8)

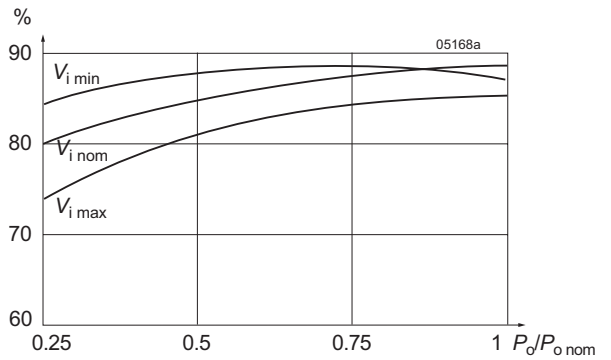


Fig. 12b
Efficiency versus input voltage and load. Typical values (110IMY15-12-12-8)

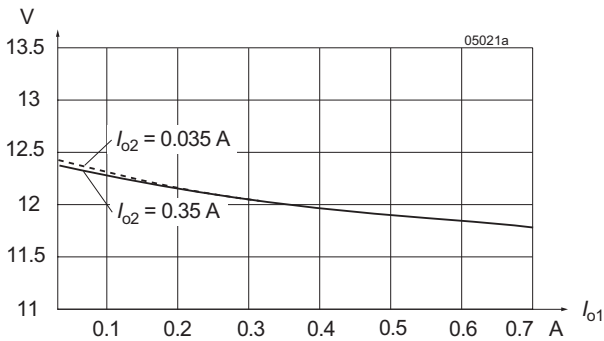


Fig. 11
Cross load regulation V_{o1} versus I_{o1} (typ.) for various I_{o2} (2 x 12 V).

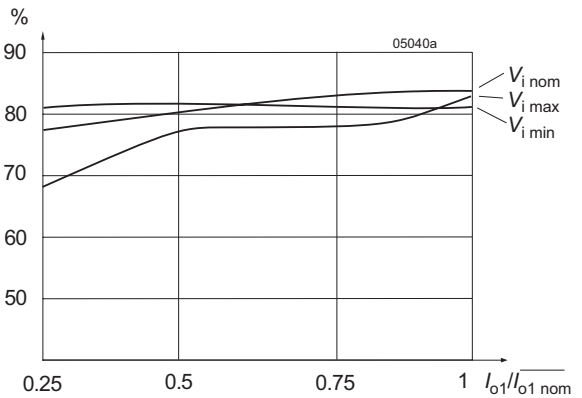


Fig. 12c
Efficiency versus input voltage and load. Typical values (48IMS15-12-12-9)

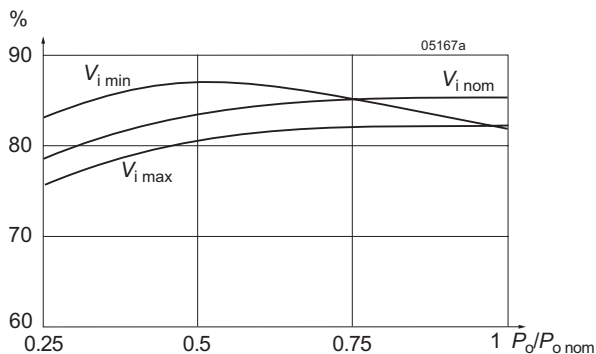


Fig. 12a
Efficiency versus input voltage and load. Typical values (40IMX15-12-12-8).

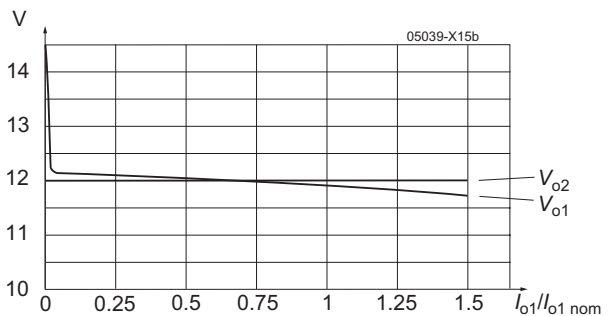


Fig. 13
Flexible load distribution on double-outputs models with option R (110IMY15-12-12-8R): Load variation from 0 to 150% of I_{o1 nom} on output 1; output 2 loaded with 50% of I_{o2 nom}.

Auxiliary Functions

Shutdown Function

The outputs of the converters may be enabled or disabled by means of a logic signal (TTL, CMOS, etc.) applied to the shut-down pin. If this function is not required, the shut-down pin should be left open-circuit.

- Converter operating: 2.0 to 20 V
- Converter disabled: -10 to +0.7 V

Adjustable Output Voltage

- R input for single-output models and -0503-models
- Trim input for double-output models
- R input as option R for most double-output models.

As a standard feature, the single- and double-output models offer adjustable output voltage(s) by using the control input R or Trim. If the control input is left open-circuit, the output voltage is set to $V_{o\ nom}$. For output voltages $V_o > V_{o\ nom}$, the minimum input voltage $V_{i\ min}$ (see *Electrical Input Data*) increases proportionally to $V_o/V_{o\ nom}$.

Single-output models with synchronous rectifier (G):

The R input is referenced to the secondary side of the converter. Adjustment of the output voltage is possible by means of an external resistor connected between the R pin and either V_{o+} or V_{o-} .

Note: For models with synchronous rectifier the logic for V_o adjustment differs from other models with R input.

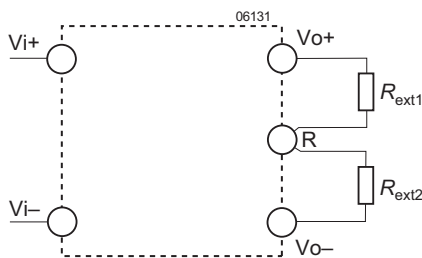


Fig. 14
Output voltage control for single-output models with synchronous rectifier.

Table 8: V_o versus V_{ext} approximate values

| $V_{o\ nom}$ [V] | Typ. values of R_{ext1} | | Typ. values of R_{ext2} | |
|---------------------|----------------------------|-----------------|----------------------------|-----------------|
| | V_o [% of $V_{o\ nom}$] | R_{ext1} [kΩ] | V_o [% of $V_{o\ nom}$] | R_{ext2} [kΩ] |
| 3.3 | 90 | 0.47 | 100 | ∞ |
| | 95 | 2.7 | 105 | 15 |
| | 100 | ∞ | 110 | 6.8 |
| 5.1 | 90 | 3.3 | 100 | ∞ |
| | 95 | 8.2 | 105 | 9.1 |
| | 100 | ∞ | 110 | 3.9 |

All other models fitted with R-input:

The R input is referenced to the secondary side of the converter. Adjustment of the output voltage is possible by means of either an external resistor or a voltage source.

a) Adjustment by means of an external resistor R_{ext} .

Depending upon the value of the required output voltage, the resistor shall be connected:

either: Between the R pin and V_{o-} to achieve an output voltage adjustment range of $V_o \approx 80$ to 100 % of $V_{o\ nom}$.

$$R_{ext1} \approx 4\text{ k}\Omega \cdot \frac{V_o}{V_{o\ nom} - V_o}$$

or: Between the R pin and V_{o+} to achieve an output voltage range of $V_o \approx 100$ to 105 % of $V_{o\ nom}$.

$$R_{ext2} \approx 4\text{ k}\Omega \cdot \frac{(V_o - 2.5V)}{2.5V \cdot (V_o/V_{o\ nom} - 1)}$$

b) Adjustment by means of an external voltage V_{ext} between V_{o-} and R pin.

The control voltage range is 1.96 to 2.62 V and allows for adjustment in the range of $V_o \approx 80$ to 105% of $V_{o\ nom}$.

$$V_{ext} \approx \frac{V_o \cdot 2.5V}{V_{o\ nom}}$$

Attempting to adjust the output below this range will cause the converter to shut down (hiccup mode).

Note: Applying an external control voltage >2.75 V may damage the converter.

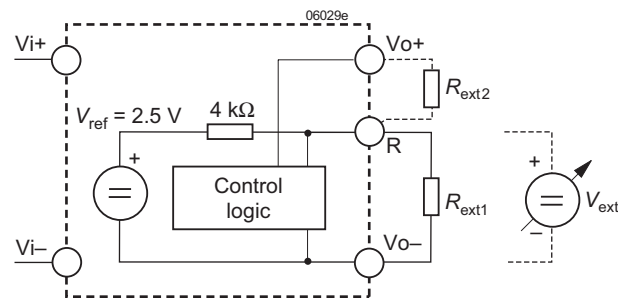


Fig. 15
Output voltage control for single-output models, -0503-models, and double-output models fitted with option R by means of the R input.

Double-output models with Trim input:

The Trim input is referenced to the primary side. The figure below shows the topology. Adjustment is possible through either an external resistor or an external voltage source V_{ext} .

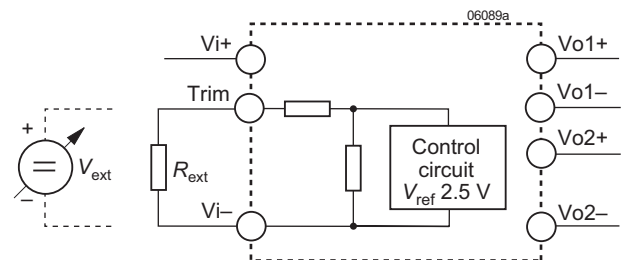


Fig. 16
Output voltage control for double-output models (without option R) by means of the Trim input.

a) Adjustment by means of an external resistor R_{ext} :

Programming of the output voltage by means of an external resistor R_{ext} is possible within 100 to 105% of $V_{o\ nom}$. R_{ext} should be connected between the Trim pin and Vi-. Connection of R_{ext} to Vi+ may damage the converter. The table below indicates suitable resistor values for typical output voltages under nominal conditions ($V_{i\ nom}$, $I_o = 0.5 I_{o\ nom}$) with either parallel-connected outputs or equal-load conditions on both outputs.

Table 9a: R_{ext} for $V_o > V_{o\ nom}$;
approximate values ($V_{i\ nom}$, $I_{o1,2} = 0.5 I_{o1/2\ nom}$)

| V_o [% $V_{o\ nom}$] | R_{ext} [k Ω] |
|----------------------------|-------------------------|
| 105 to 108 (107 typically) | 0 |
| 105 | 1.5 |
| 104 | 5.6 |
| 103 | 12 |
| 102 | 27 |
| 101 | 68 |
| 100 | ∞ |

b) Adjustment by an external voltage source V_{ext} :

For programming the output voltage in the range 75 to 105% of $V_{o\ nom}$, a source V_{ext} (0 to 20 V) is required, connected between the Trim pin and Vi-. The table below indicates values V_o versus V_{ext} (nominal conditions $V_{i\ nom}$, $I_o = 0.5 I_{o\ nom}$), with either parallel-connected outputs or equal load conditions on both outputs. Applying a control voltage >20 V will set the converter into a hiccup mode. Direct paralleling of the Trim pins of parallel connected converters is possible.

Table 9b: V_o versus V_{ext} for $V_o = 75$ to 105% $V_{o\ nom}$;
typical values ($V_{i\ nom}$, $I_{o1/2} = 0.5 I_{o1/2\ nom}$)

| V_o [% $V_{o\ nom}$] | V_{ext} [V] |
|-------------------------|---------------|
| ≥ 105 | 0 |
| 102 | 1.6 |
| 95 | 4.5 |
| 85 | 9 |
| 75 | 13 |

Electromagnetic Compatibility (EMC)

A suppressor diode together with an input filter forms an effective protection against high input transient voltages, which

typically occur in many installations, but especially in battery-driven mobile applications.

Electromagnetic Immunity

Table 10: Immunity type tests

| Phenomenon | Standard | Class Level | Coupling mode ² | Value applied | Waveform | Source Imped. | Test procedure | In oper. | Perf. crit. ³ |
|----------------------------------|------------------|---------------------|--------------------------------|---|--|---------------|---|----------|--------------------------|
| Electrostatic discharge to case | IEC/EN 61000-4-2 | 2 | contact discharge (R pin open) | 4000 V_p | 1/50 ns | 330 Ω | 10 positive and 10 negative discharges | yes | B |
| | | 3 | air discharge (R pin open) | 8000 V_p | | | | | |
| Electromagnetic field | IEC/EN 61000-4-3 | \times^5 3^6 | antenna | 20 V/m ⁵ 3 V/m ⁶ | AM 80% 1 kHz | n.a. | 80 to 1000 MHz | yes | A |
| | ENV 50204 | 3 | antenna | 10 V/m | PM, 50% duty cycle, 200 Hz repetition frequ. | n.a. | 900 MHz | yes | A |
| Electrical fast transients/burst | IEC/EN 61000-4-4 | 3^4 | direct +i/-i | 2000 V_p^4 | bursts of 5/50 ns 5 kHz rep. rate transients with 15 ms burst duration and a 300 ms period | 50 Ω | 60 s positive 60 s negative transients per coupling mode | yes | A |
| Surges | IEC/EN 61000-4-5 | 2 3^1 | +i/-i | 1000 V_p 2000 V_p^1 | 1.2/50 μ s | 2 Ω | 5 pos. and 5 neg. surges | yes | B |
| RF conducted immunity | IEC/EN 61000-4-6 | 3 2^6 | +i/-i | 10 VAC 3 VAC ⁶ | AM modulated 80%, 1 kHz | 150 Ω | 0.15 to 80 MHz | yes | A |

¹ External components required; see Fig. 6 and table 6.

² i = input, o = output.

³ A = normal operation, no deviation from specs., B = temporary deviation from specs. possible.

⁴ Corresponds to the railway standard EN 50121-3-2:2006, table 9.3.

⁵ Corresponds to the railway standard EN 50121-3-2:2006, table 9.1.

⁶ Valid for 24IMS15 and 48IMS15

Conducted Emissions

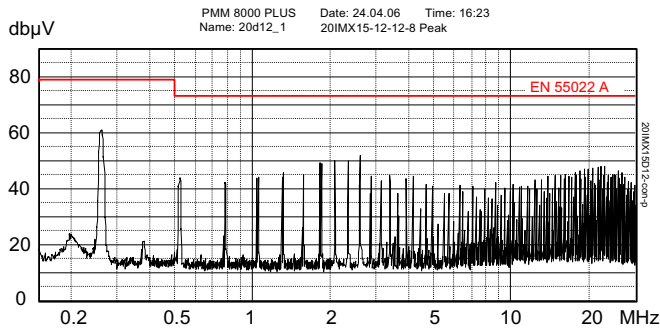


Fig. 17a
Typ. disturbance voltage (peak) at pos. input according to EN 55011/022, measured at $V_{i\text{nom}}$ and $I_{o\text{nom}}$. Output leads 0.1 m, twisted, input capacitors see table 11 (20IMX15-12-8)

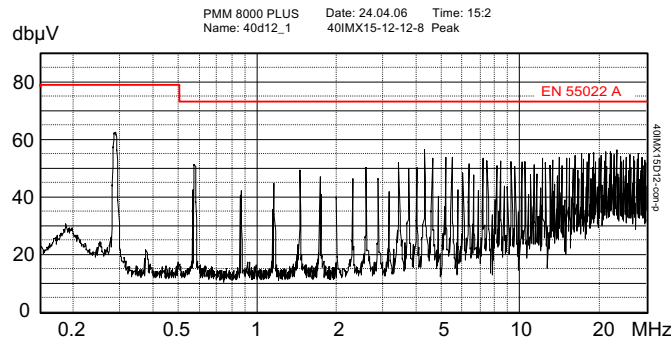


Fig. 17b
Typ. disturbance voltage (peak) at pos. input according to EN 55011/022, measured at $V_{i\text{nom}}$ and $I_{o\text{nom}}$. Output leads 0.1 m, twisted, input capacitors see table 11 (40IMX15-12-8)

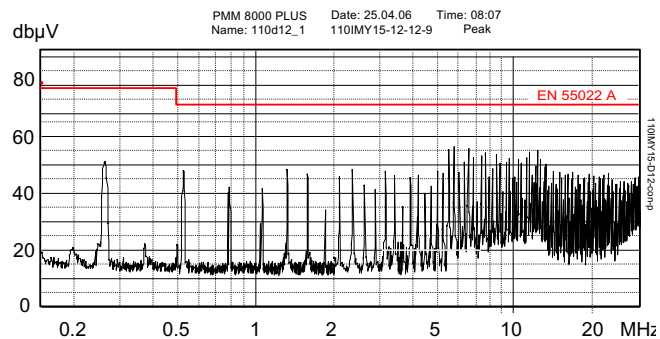


Fig. 17c
Typ. disturbance voltage (peak) at pos. input according to EN 55011/022, measured at $V_{i\text{nom}}$ and $I_{o\text{nom}}$. Output leads 0.1 m, twisted, input capacitors see table 11 (110IMY15-12-8)

Table 11: External capacitors across the input to comply with EN 55011/EN 55022, Class A, conducted; see fig. 17a, b, c

| Model | Ceramic ML | Electrolytic capacitor |
|------------------|---------------------------------|--------------------------------|
| 20IMX15, 24IMS15 | 0.47 $\mu\text{F}/50\text{ V}$ | 220 $\mu\text{F}/50\text{ V}$ |
| 40IMX15, 48IMS15 | 0.33 $\mu\text{F}/100\text{ V}$ | 220 $\mu\text{F}/100\text{ V}$ |
| 110IMY15 | 0.15 $\mu\text{F}/200\text{ V}$ | 4.7 $\mu\text{F}/200\text{ V}$ |

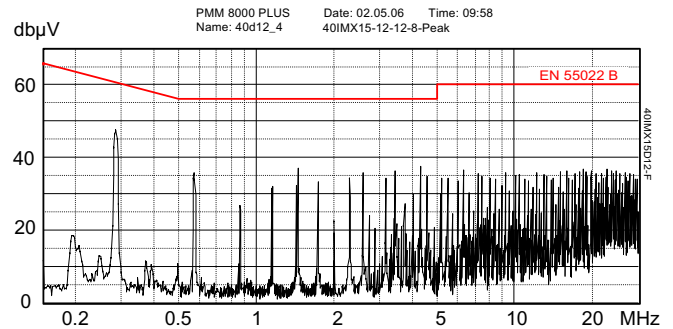


Fig. 18
Typ. disturbance voltage (peak) at input according to EN 55011/022, measured at $V_{i\text{nom}}$ and $I_{o\text{nom}}$. Output leads 0.1 m, twisted, input filter as in fig. 19 (40IMX15-12-8)

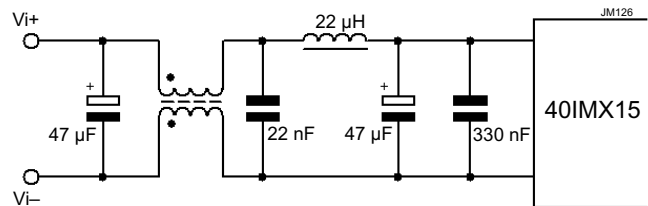


Fig. 19
Example for external circuitry to comply with EN 55011/ EN 55022, Class B, conducted.
This filter was designed for a 40IMX15-12-12-8. All capacitors are rated to 100 V, the chokes to 1.5 A.

Immunity to Environmental Conditions

Table 12: Mechanical and climatic stress

| Test | Method | Standard | Test Conditions | Status |
|-----------------|---|---|---|-------------------------|
| Cab | Damp heat steady state | IEC/EN 60068-2-78 MIL-STD-810D sect. 507.2 | Temperature: 40 ±2 °C Relative humidity: 93 +2/-3 % Duration: 56 days | Converter not operating |
| Ea ¹ | Shock (half-sinusoidal) | IEC/EN 60068-2-27 MIL-STD-810D sect. 516.3 | Acceleration amplitude: 50 g _n = 490 m/s ² Bump duration: 11 ms Number of bumps: 18 (3 each direction) | Converter operating |
| Eb | Bump (half-sinusoidal) | IEC/EN 60068-2-29 MIL-STD-810D sect. 516.3 | Acceleration amplitude: 25 g _n = 245 m/s ² Bump duration: 1 ms Number of bumps: 6000 (1000 each direction) | Converter operating |
| Fc | Vibration (sinusoidal) | IEC/EN 60068-2-6 | Acceleration amplitude: 0.35 mm (10 to 60 Hz) 5 g _n = 49 m/s ² (60 to 2000 Hz) Frequency (1 Oct/min): 10 to 2000 Hz Test duration: 7.5 h (2.5 h each axis) | Converter operating |
| Fda | Random vibration wide band reproducibility high | IEC/EN 60068-2-35 | Acceleration spectral density: 0.05 g _n ² /Hz Frequency band: 20 to 500 Hz Acceleration magnitude: 4.9 g _{n rms} Test duration: 3 h (1 h each axis) | Converter operating |
| Kb | Salt mist, cyclic (sodium chloride NaCl solution) | IEC/EN 60068-2-52 | Concentration: 5% (30 °C) Duration: 2 h per cycle Storage: 40 °C, 93% rel. humidity Storage duration: 22 h per cycle Number of cycles: 3 | Converter not operating |

1 Covers also EN 50155 /61373 category 1, class B, body mount (= chassis of a coach)

Temperatures

Table 14: Temperature specifications

Valid for air pressure of 800 to 1200 hPa (800 to 1200 mbar)

| Temperature | | | -9 | | -8 | | Unit |
|------------------------------------|--------------------------|-----|-----|--------------------|-----|----|------|
| Characteristics | Conditions | min | max | min | max | | |
| T _A Ambient temperature | Operational ¹ | -40 | 71 | -40 ^{2 3} | 85 | °C | |
| T _C Case temperature | | -40 | 95 | -40 ^{2 3} | 105 | | |
| T _S Storage temperature | Non operational | -55 | 100 | -55 | 105 | | |

¹ See *Thermal Considerations*

² Start-up at -55 °C, except -RG models (synchronous rectifier)

³ -25 °C for all -RG models (synchronous rectifier)

Reliability

Table 13: MTBF

| Model | Standard | Ground Benign | Ground Fixed | | Ground Mobile | Unit |
|-----------------|---------------|------------------------|------------------------|------------------------|------------------------|------|
| | | T _C = 40 °C | T _C = 40 °C | T _C = 70 °C | T _C = 50 °C | |
| 20IMX15-12-12-8 | MIL-HDBK-217F | 697 000 | 366 000 | 229 000 | 312 000 | h |
| 20IMX15-15-15-8 | Belcore | 2 345 000 | 1 172 000 | 632 000 | 317 000 | |
| 48IMS15-05-05-9 | MIL-HDBK-217F | 535 000 | 283 000 | 179 000 | 245 000 | |
| 110IMY15-05-8R | MIL-HDBK-217F | 485 000 | 255 000 | 167 000 | 223 000 | |
| | Belcore | 1 547 000 | 774 000 | 394 000 | 206 000 | |

Mechanical Data

Dimensions in mm (inches)

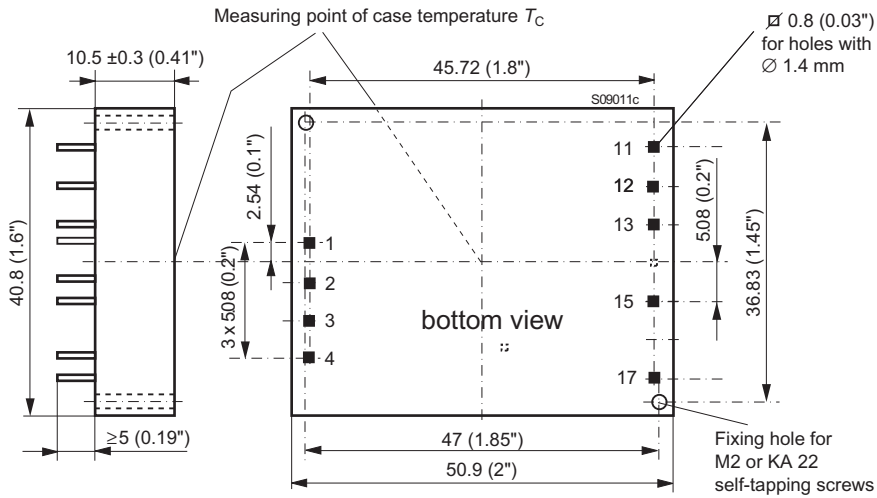


Fig. 20
Case IMX15, IMS15, IMY15
Material: Fortron 1140L6
Weight: <35 g

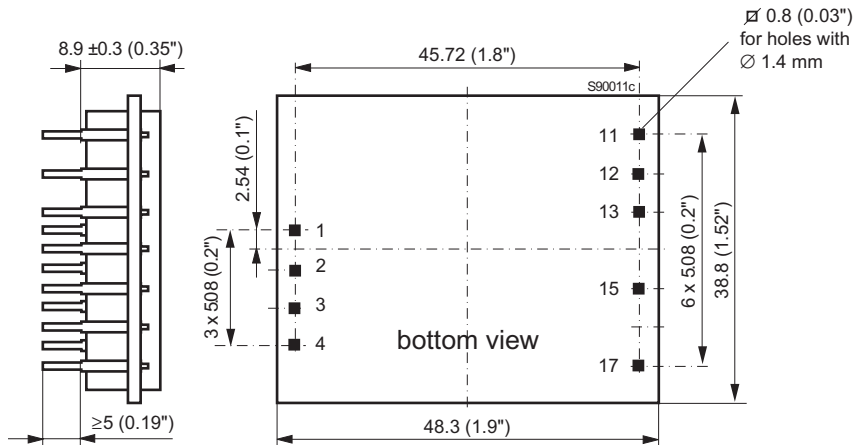


Fig. 21
Open frame (option Z)

Safety and Installation Instructions

Pin allocation

Table 15: Pin allocation

| Pin | Standard and Option Z | | |
|-----|-----------------------|-----------------|-----------------|
| | single | double | -0503- |
| 1 | Vi+ | Vi+ | Vi+ |
| 2 | Vi- | Vi- | Vi- |
| 3 | - | Trim | n.c. |
| 4 | \overline{SD} | \overline{SD} | \overline{SD} |
| 5 | - | - | - |
| 6 | - | - | - |
| 11 | - | Vo1+ | Vo2+ |
| 12 | - | Vo1- | Go |
| 13 | Vo+ | Vo2+ | Vo1+ |
| 15 | Vo- | Vo2- | Go |
| 17 | R | n.c. | R |

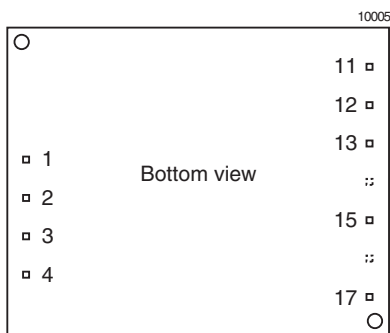


Fig. 22
Footprint

Installation Instructions

Installation must strictly follow the national safety regulations in compliance with the enclosure, mounting, creepage, clearance, casualty, markings and segregation requirements of the end-use application.

Connection to the system shall be made via a printed circuit board with hole diameters of 1.4 mm \pm 0.1 mm for the pins.

The converter must be connected to a secondary circuit.

Do not open the converter.

Ensure that a converter failure (e.g., by an internal short-circuit) does not result in a hazardous condition.

Input Fuse

To prevent excessive current flowing through the input supply lines in case of a malfunction an external fuse should be installed in a non-earthed input supply line; see table 4.

Standards and Approvals

The converters are approved according to IEC 60950-1 and UL/

CSA 60950-1 2nd Edition. 110IMY models are fitted with a CE mark.

The converters have been evaluated for:

- Building in
- Supplementary insulation input to output, based on their maximum input voltage (IMX15, IMS15)
- Reinforced insulation input to output, based on their maximum input voltage (IMY15 models)
- Pollution degree 2 environment (not option Z)
- Connecting the input to a secondary circuit subject to a maximum transient rating of 1500 V (IMX15, IMS15)
- Connecting the input to a secondary circuit subject to a maximum transient rating of 2500 V (IMY15)

The converters are subject to manufacturing surveillance in accordance with the above mentioned UL standards and with ISO9001:2000.

Railway Applications

To comply with railway standards, all components are coated with a protective lacquer (except option Z).

Protection Degree and Cleaning Liquids

The protection degree of the converters is IP 40, except open-frame models (option Z).

In order to avoid possible damage, any penetration of cleaning fluids should be prevented, since the power supplies are not hermetical sealed.

However, open-frame models (option Z) leave the factory unlacquered; they may be lacquered by the customer, for instance together with the mother board. Cleaning agents are not permitted – except washing at room temperature with isopropyl alcohol. If necessary, the mother board must be cleaned, before fitting the open-frame converter.

Note: Cleaning liquids may damage the adhesive joints of the ferrite cores.

Isolation

The electric strength test is performed in the factory as routine test in accordance with EN 50116 and IEC/EN 60950, and should not be repeated in the field. Power-One will not honor any warranty claims resulting from electric strength field tests.

Table 16: Electric strength test voltages

| Characteristic | Input to output | | | Output to output | Unit |
|--------------------------------------|-------------------|------------------|-------|------------------|------------|
| | IMS15 | IMX15 | IMY15 | | |
| Factory test \geq 1 s | 1.2 | 1.5 ¹ | 3.0 | 0.1 | kVAC |
| Equivalent DC voltage | (1.7) | (2.1) | (4.2) | 0.15 | kVDC |
| Insulation resistance at 500 VDC | >100 | >100 | >100 | - | M Ω |
| Partial discharge extinction voltage | Consult Power-One | | | - | kV |

¹ 1.5 kVAC according to IEC 60950, sect. 6.2, Telecom equipment; type test with 1.5 kVAC / 60 s (IEE 802.3). IMX15 units produced before 2013 were tested only with 1.2 kVAC.

² The test voltage between outputs is not applied as routine test.

Description of Options

Table 17: Survey of options

| Option | Function of option | Characteristic |
|--------|---|---|
| -9 | Temperature range, NFND | See table <i>Temperatures specifications</i> |
| R | R-input and magnetic feedback; NFND as option | Magnetic feedback for models without sychr. rectifier |
| i | Inhibit | |
| Z | Open frame | See <i>Mechanical Data</i> |

Option -9 versus -8

IMX15 and IMY15 models with -9 (not for new designs) have a limited temperature range. Standard models with suffix -8 are rated up to $T_A = 85\text{ }^\circ\text{C}$; see table *Temperature specifications*.

Option R

Magnetic feedback from the output for closer regulation of the output voltage V_{o1} of double output units (standard for single output units and -0503- models). It enables the adjustment of the output voltages via the R-input (pin 17) on the secondary side by an external resistor or an external voltage source. This function is described in *Auxiliary Functions*.

Furthermore, the output 1 is accurately regulated like the single output models. The Trim input (pin 3) is not connected.

Option i: Inhibit

Excludes the shut-down function.

The output(s) of the converter may be enabled or disabled by means of a logic signal (TTL, CMOS, etc.) applied to the inhibit pin. No output voltage overshoot will occur, when the converter is turned on. If the inhibit function is not required, the inhibit pin

should be connected to V_{i-} to enable the output (active low logic, fail safe).

Voltage on pin i:

Converter operating: $-10\text{ V to }0.8\text{ V}$
 Converter inhibited: $2.4\text{ V to }V_{i\text{max}} (<75\text{ V})$ or
 pin i left open-circuit:

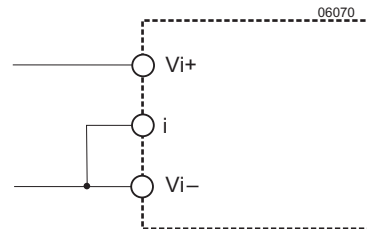


Fig. 23

If the inhibit function is not used, the inhibit pin should be connected to V_{i-} .

Option G or -G

Products RoHS-compliant for all 6 substances. See sect. RoHS-Compliant Models (page 3) for the correct denotation.

NUCLEAR AND MEDICAL APPLICATIONS - Power-One products are not designed, intended for use in, or authorized for use as critical components in life support systems, equipment used in hazardous environments, or nuclear control systems without the express written consent of the respective divisional president of Power-One, Inc.

TECHNICAL REVISIONS - The appearance of products, including safety agency certifications pictured on labels, may change depending on the date manufactured. Specifications are subject to change without notice.