

1000M Single Port Tab-Down

Trxcom Technology Inc

- ※Single port Tab-Down with internal magnetics for 1000 Base-TX
- ※Internal magnetics options available
- ※350uH minimum OCL with 8 mA bias current
- ※RoHS compliant
- ※Peak temperature: $260 \pm 5^\circ\text{C}$.



1000 Base-T Electrical Specifications

Part Number		Turns Ratios		Insertion Loss (dB)	Return Loss (dB TYP)@100Ω				Crosstalk (dB TYP)			DCMR (dB TYP)			Hipot (Vrms)
STD temp ¹	EXT temp ²	TX	RX		0.3-100MHz	1-30MHz	40MHz	50MHz	60-80MHz	30MHz	60MHz	100MHz	30MHz	60MHz	
TRJG0801	TRJG4801	1:1	1:1	-1.2	-16	-13.5	-11.5	-10	-40	-36	-30	-35	-32	-30	1500
TRJG0802	TRJG4802	1:1	1:1	-1.2	-16	-13.5	-11.5	-10	-40	-36	-30	-35	-32	-30	1500
TRJG0803	TRJG4803	1:1	1:1	-1.2	-16	-13.5	-11.5	-10	-40	-36	-30	-35	-32	-30	1500
TRJG0804	TRJG4804	1:1	1:1	-1.2	-16	-13.5	-11.5	-10	-40	-36	-30	-35	-32	-30	1500

NOTE: 1.Standard(STD) operating temperature are 0°C to $+70^\circ\text{C}$. 2.Extended(EXT) operating temperature are -40°C to $+85^\circ\text{C}$.

TRJG XXXX X X NL
 _____ RoHS
 _____ LED Table(2)
 _____ Mechanical Table(1)
 _____ Model: Schematic

(1) TRJ Series Mechanical:

Code	Description
A	With Staggered Led Footprint and EMI-Finger
B	With Staggered Led Footprint and Non EMI-Finger
C	Without Led, with EMI-Finger
D	Without Led and EMI-Finger
E	With Inline Led Footprint and EMI-Finger (4.90mm*)
F	With Inline Led Footprint and Non EMI-Finger (4.90mm*)
G	With Inline Led Footprint and EMI-Finger (4.06mm*)
H	With Inline Led Footprint and Non EMI-Finger (4.06mm*)

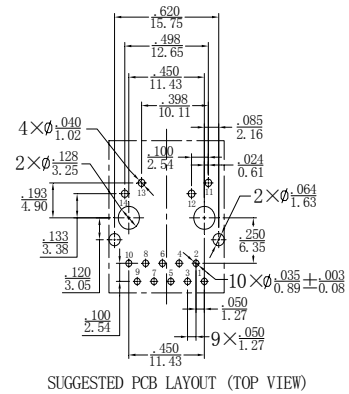
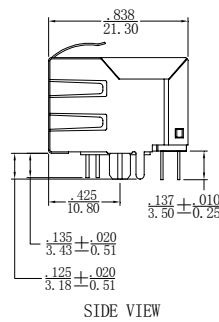
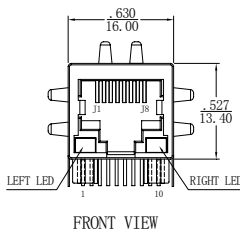
*" The distance of led pin to plastic post.

(2) LED Ordering Options:

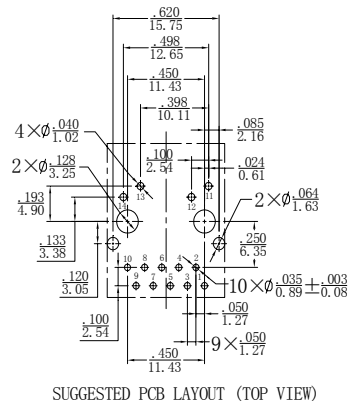
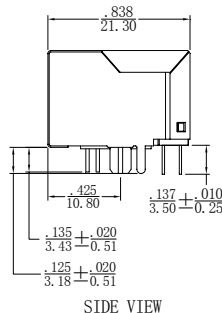
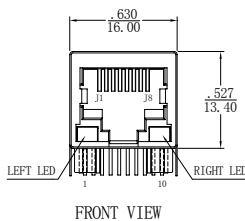
LED CODE	LED COLOR		LED POLARITY
	LEFT LED	RIGHT LED	
A	YELLOW	GREEN	11 12
B	GREEN	YELLOW	13 14
C	GREEN	GREEN	14
D	YELLOW	GREEN	11 12
E	GREEN	YELLOW	13 14
F	GREEN	GREEN	14
V	GREEN	ORANGE/GREEN	11 12 13 14

Mechanica

A



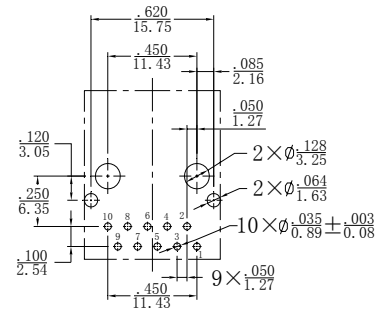
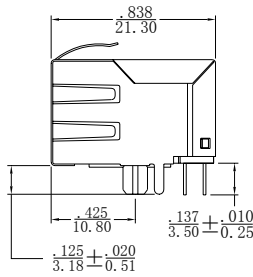
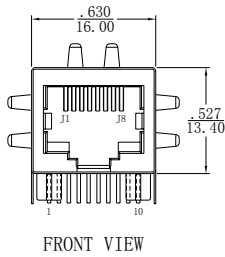
B



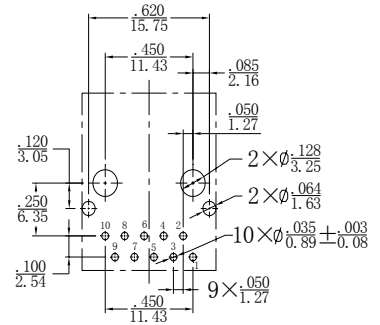
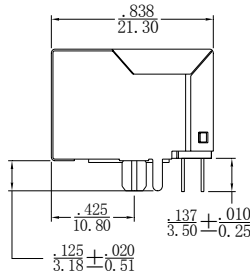
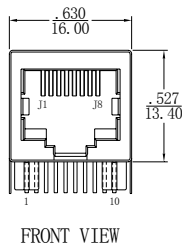
1000M Single Port Tab-Down

Trxcom Technology Inc

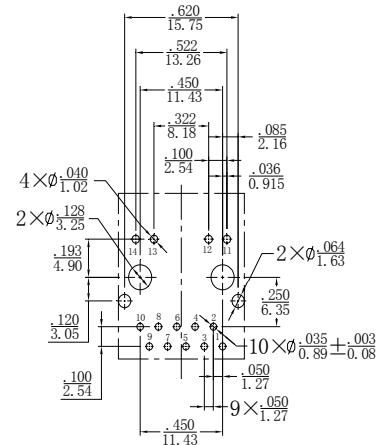
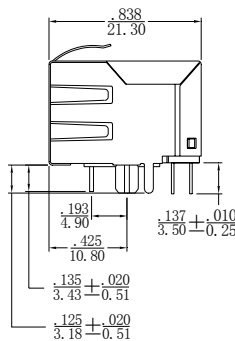
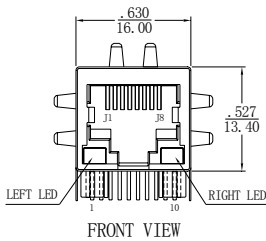
C



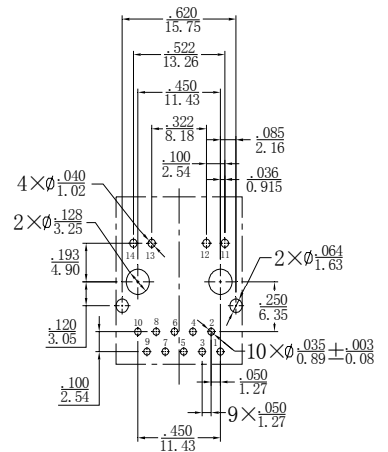
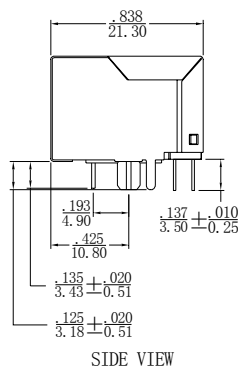
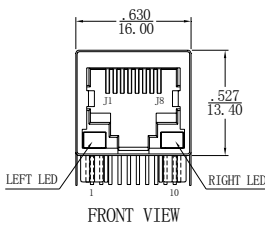
D



E



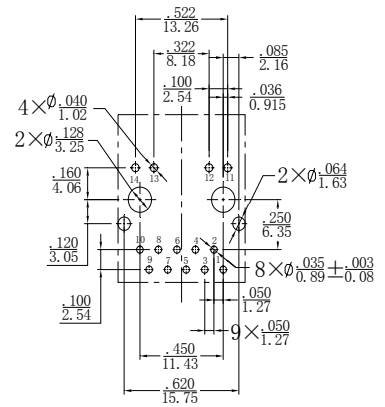
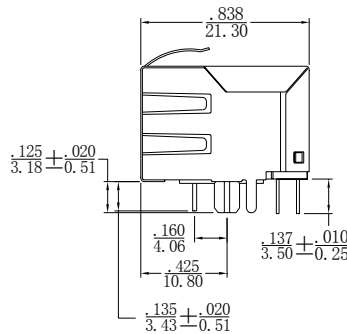
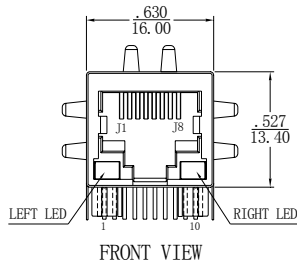
F



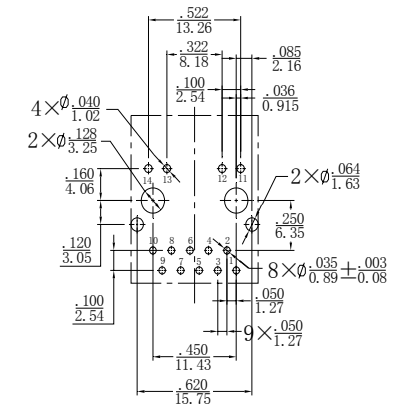
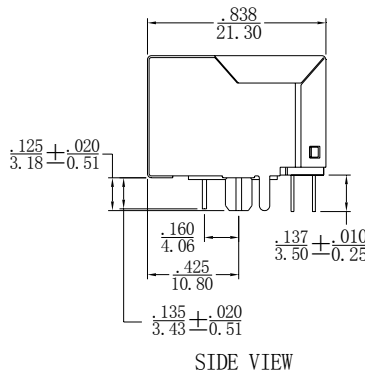
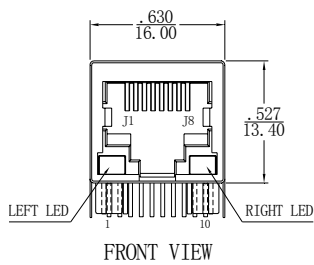
1000M Single Port Tab-Down

Trxcom Technology Inc

G



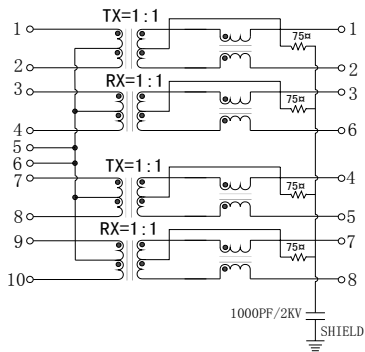
H



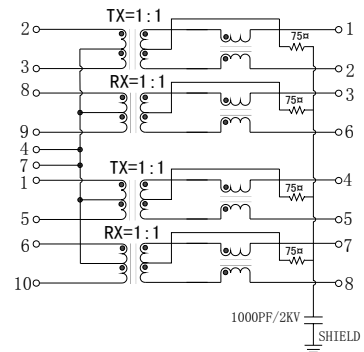
Dimensions: Inch/mm
Unless otherwise specified,
all tolerances are $\pm 0.25^{.010}$

Schematics

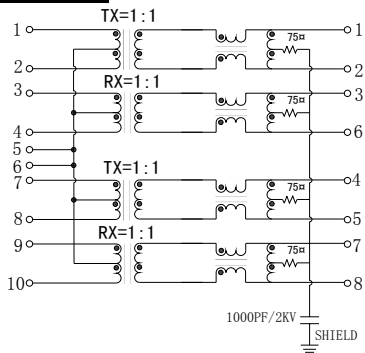
TRJG0801



TRJG0802



TRJG0803



TRJG0804

