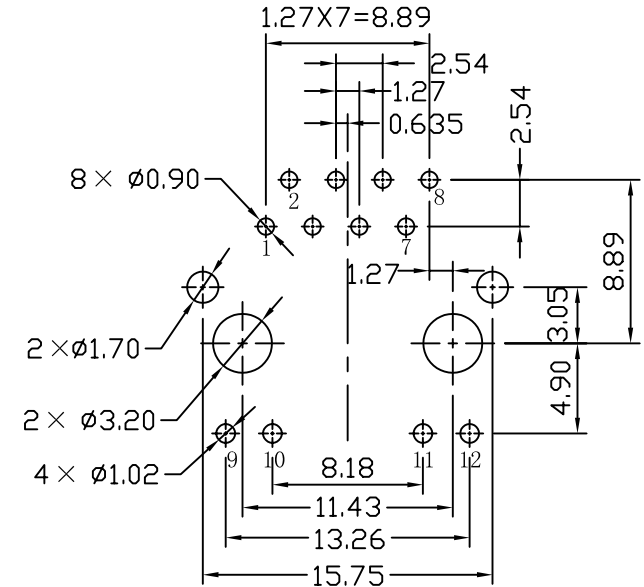
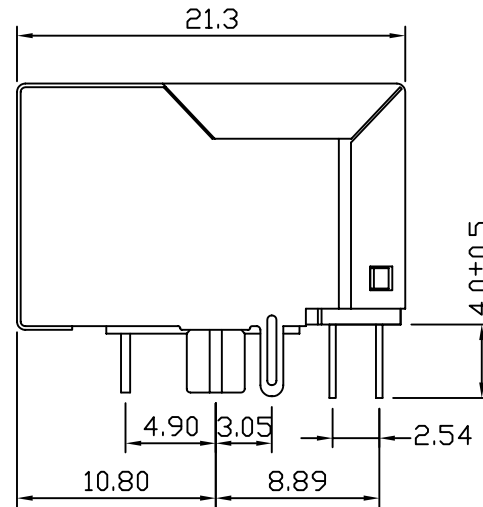
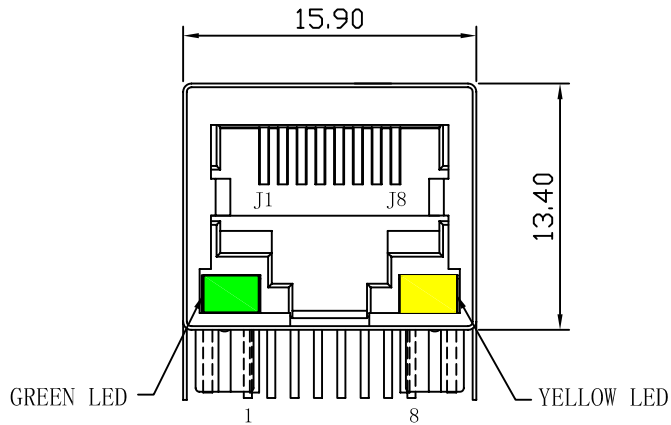
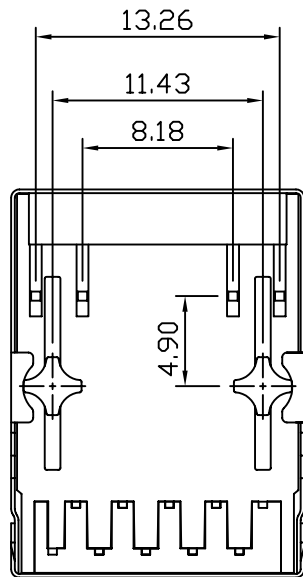


# Mechanical:

REV.	ECN NO.	DESCRIPTION	DATE	APPD
A	REL		10/01/2009	



SUGGESTED PCB LAYOUT (TOP VIEW)



## NOTES:

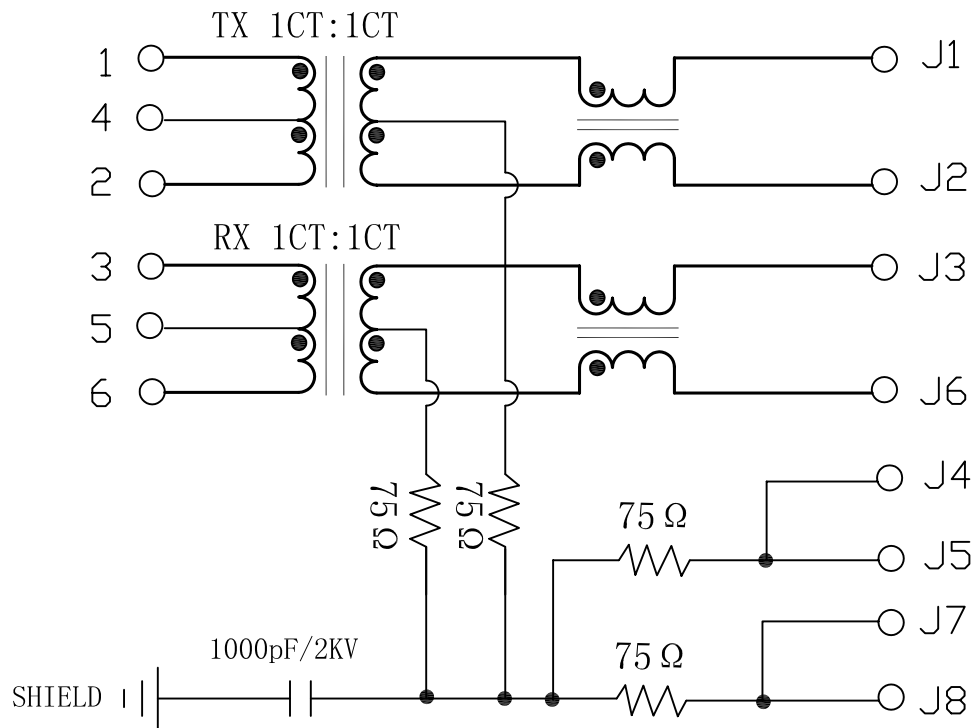
1. Designed to support application, such as SOHO (ADSL modems), LAN-on-Motherboard (LOM), hub and Switches.
2. Meets IEEE 802.3 specification
3. Connector Materials:  
 Housing: Thermoplastic UL94V-0  
 Contact/Shield: Copper alloy  
 Shield plating: Nickel  
 Contact plating: Gold 6 micro-inches min. In contact area.
4. Wave solder tip temperature: 265°C Max  
 Wave solder tip temperature time: 5 Sec Max
5. UL Certification: File Number E321120



X:X ±0.30	APPD:	Trxcom ShenZhen Trxcom Electronics Co., ltd
X:XX ±0.20	CHKD:	
X:XXX ±0.05	DR: leo	TITLE: RJ45 Connector with 10/100 Base-TX Integrated Magnetic
ANGLES ±1°	UNIT: mm	PART NO.: TRJ0037FBNL
	SCALE: 2/1	SHEET: 1/2
	REV: A	DWG NO.: TRC09011007

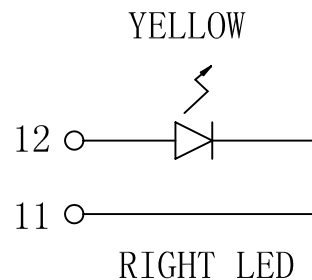
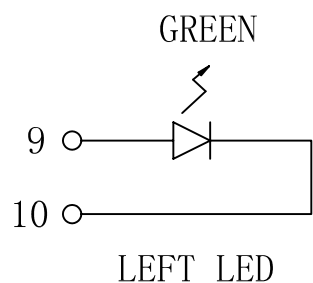
# Schematic:

REV.	ECN NO.	DESCRIPTION	DATE	APPD
A	REL		10/01/2009	



## Electrical Specifications @25°C

- INDUCTANCE: 350uH MIN @100KHz, 100mV DC Bias
- TURNS RATIO(±2%):  
TX=1CT:1CT      RX=1CT:1CT
- HIPOT: 1500VAC
- INSERTION LOSS:  
-1.0dB MAX @ 1.0MHz TO 65MHz
- RETURN LOSS:  
-20dB MIN @ 1MHz TO 10MHz  
-16dB MIN @ 10MHz TO 30MHz  
-12dB MIN @ 30MHz TO 60MHz  
-10dB MIN @ 60MHz TO 100MHz
- CROSS TALK:  
-40dB MIN @1MHz TO 30MHz  
-35dB MIN @30MHz TO 60MHz  
-30dB MIN @60MHz TO 100MHz
- COMMON TO COMMON MODE REJECTION:  
-30dB MIN @1MHz TO 50MHz  
-20dB MIN @50MHz TO 150MHz
- OPERATING TEMPERATURE: 0°C ~70°C.



X:X	±0.30	APPD:	Trxcom	
X:XX	±0.20	CHKD:	ShenZhen Trxcom Electronics Co.,ltd	
X:XXX	±0.05	DR: leo	TITLE: RJ45 Connector with 10/100 Base-TX Integrated Magnetic	
ANGLES	±1°	UNIT: mm	PART NO.: TRJ0037FBNL	
	SCALE: 2/1	SHEET: 2/2	REV: A	DWG NO.: TRC09011007