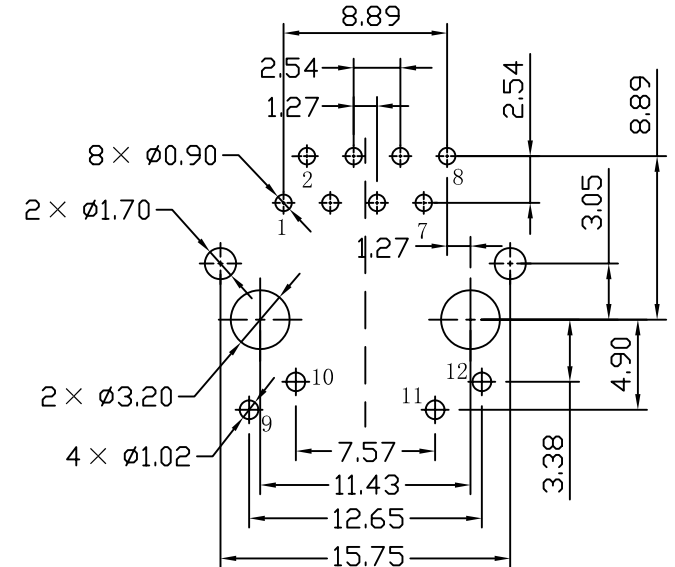
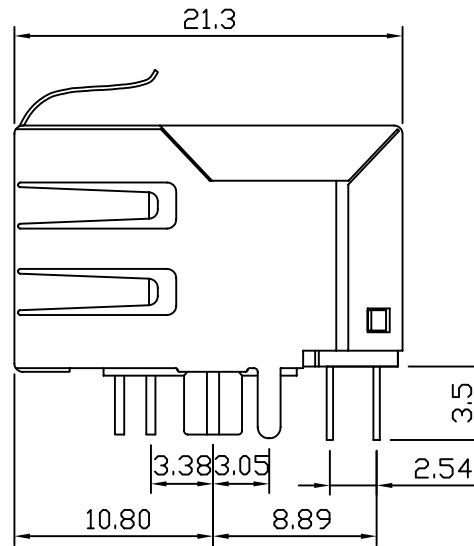
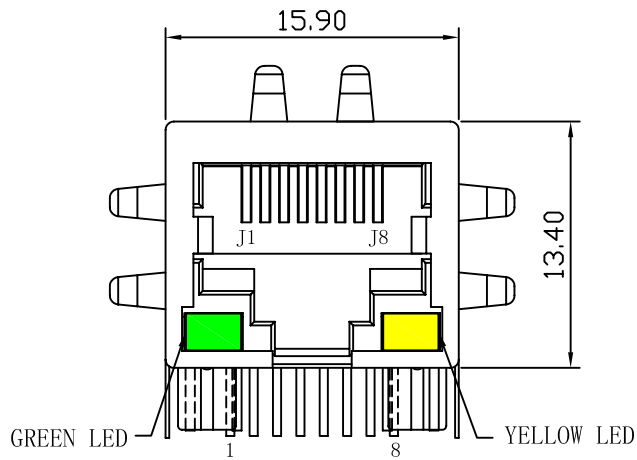
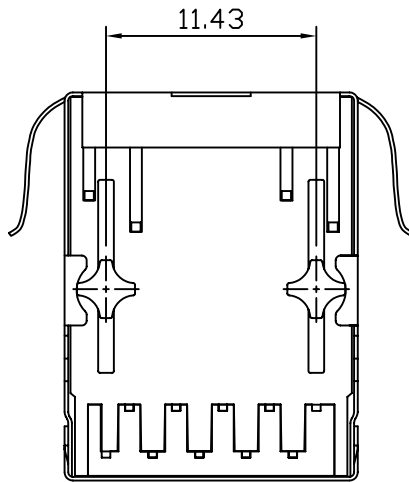


Mechanical:

| REV. | ECN NO. | DESCRIPTION | DATE | APPD |
|------|---------|-------------|------------|------|
| A | REL | | 26/11/2007 | |



SUGGESTED PCB LAYOUT (TOP VIEW)



NOTES:

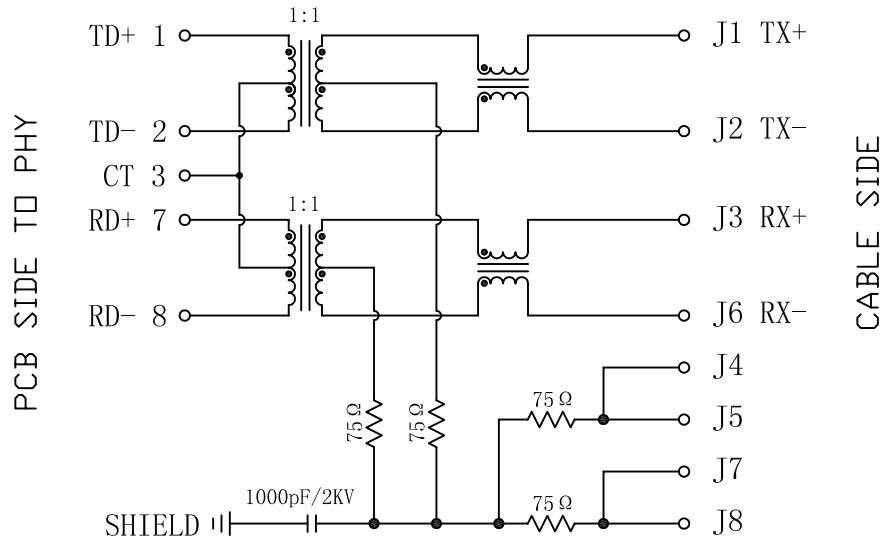
1. Designed to support application, such as SOHO (ADSL modems), LAN-on-Motherboard (LOM), hub and Switches.
2. Meets IEEE 802.3 specification
3. Connector Materials:
 Housing: Thermoplastic UL94V-0
 Contact/Shield: Copper alloy
 Shield plating: Nickel
 Contact plating: Gold 6 micro-inches min. In contact area.
4. Wave solder tip temperature: 265°C Max
 Wave solder tip temperature time: 5 Sec Max
5. UL Certification: File Number E321120



| | | | | |
|-------------|-------------|---|--------|----------------------|
| X:X ±0.30 | APPD: | Trxcom | | |
| X:XX ±0.20 | CHKD: | ShenZhen Trxcom Electronics Co., ltd | | |
| X:XXX ±0.05 | DR: C. H. Y | TITLE: RJ45 Connector with 10/100 Base-T Integrated Magnetics | | |
| ANGLES ±1° | UNIT: mm | PART NO.: TRJ0013AHNL | | |
| | SCALE: 2/1 | SHEET: 1/2 | REV: A | DWG NO.: TRC07112603 |

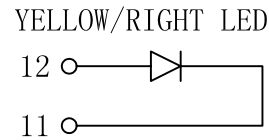
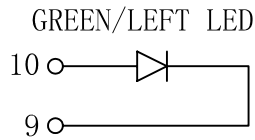
Schematic:

| REV. | ECN NO. | DESCRIPTION | DATE | APPD |
|------|---------|-------------|------------|------|
| A | REL | | 26/11/2007 | |



PCB SIDE TO PHY

CABLE SIDE



ELECTRICAL SPECIFICATIONS @25°C

- Turn Ratio ($\pm 2\%$):
TX=1:1 RX=1:1
- Inductance OCL: 350uH MIN
@100KHz/0.1V, 8mA DC Bias
- Insertion Loss:
-1.0dB MAX @1-100MHz
- Return Loss:
-18dB MIN @1-30MHz
-16dB MIN @30-60MHz
-12dB MIN @60-80MHz
- Cross talk:
-30dB MIN @1-100MHz
- Common Mode Rejection:
-30dB MIN @1-100MHz
- Hipot Test: 1500Vrms MIN
- Operating Temperature Range: 0°C TO 70°C



| | | | |
|--------|---------------|-------------|--|
| X:X | ± 0.30 | APPD: | Trxcom |
| X:XX | ± 0.20 | CHKD: | ShenZhen Trxcom Electronics Co., ltd |
| X:XXX | ± 0.05 | DR: C. H. Y | TITLE: RJ45 Connector with 10/100 Base-T Integrated Magnetics |
| ANGLES | $\pm 1^\circ$ | UNIT: mm | PART NO. : TRJ0013AHNL |