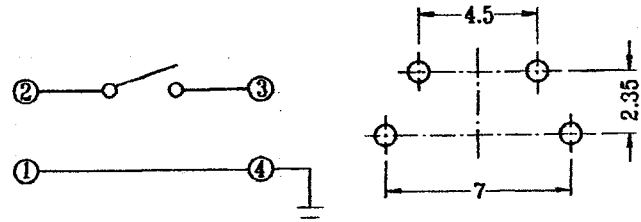
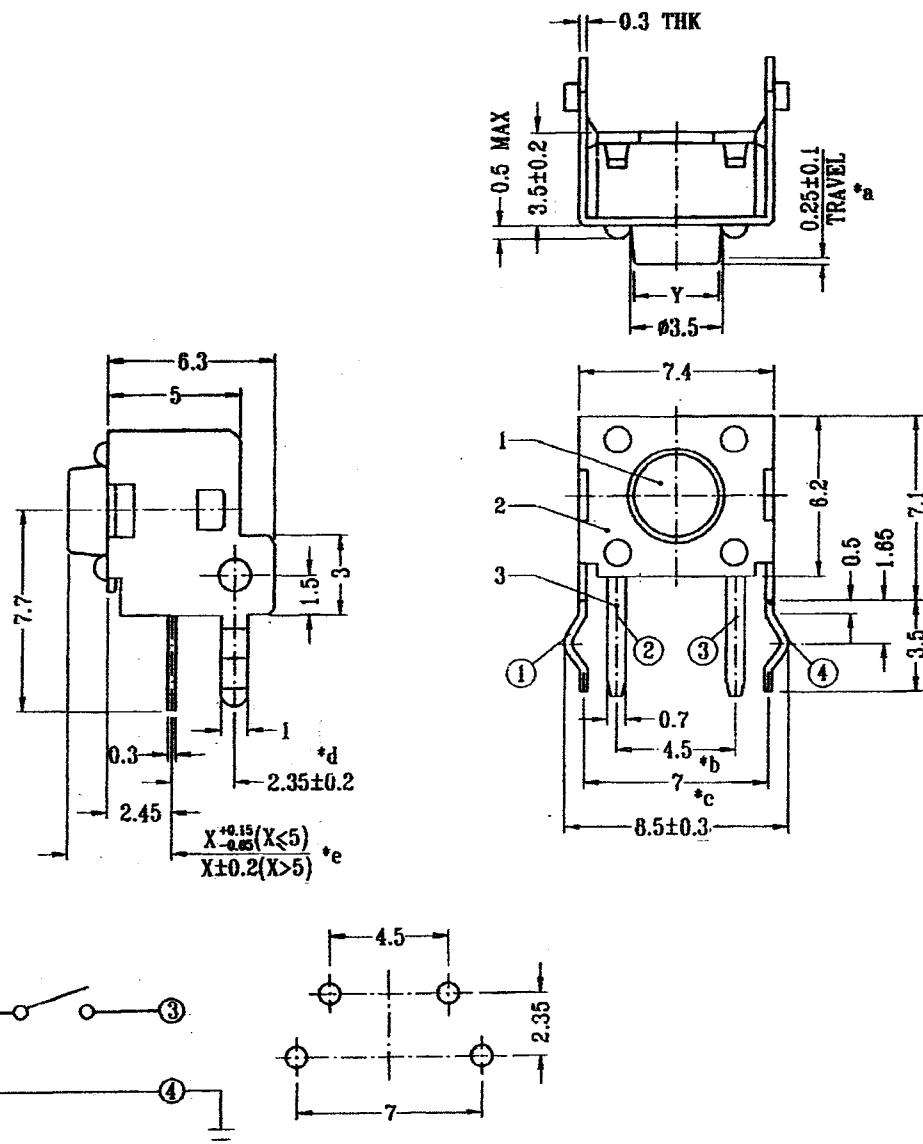


RoHS
Compliant
Drawing For
Reference Only



Technical requirement :

1. This product should meet EU RoHS related requirement.
2. The surface of plastic part should be without any crackle such as burr,lack,and so on phenomenon.
3. The surface of metal part should be without any defect such as scaur,nick,oxidation and plating problem.
4. The electronic performance should be the same as spec.
5. The un-specified tolerance is : $\leq 6 \pm 0.2$
 6~20±0.3
 >20±0.4

| | |
|-----------------------------------|-----------------------------|
| 額定負荷 Ratings | DC 12 V 5.0 mA |
| 初期接觸電阻 initial Contact Resistance | 100 m Ω Max |
| 絕緣電阻 Insulation Resistance | DC 100V 60 Sec. 100 m Ω Min |
| 抗電強度 Dielectric Voltage | AC 250V (50-60Hz) 60 Sec. |

DCI DRAGON CITY INDUSTRIES LIMITED

| | | | | | | |
|-----------|---------------|-------------|----------|-----------|--------|------------------------|
| Item Name | TACT SWITCH | Tolerance : | Design | K.W Law | Remark | Scale |
| Item No. | TS-0240-X(SL) | Unit : mm | Drawing | W.K Yeung | Remark | Material |
| | | | Check | K.L Wong | Remark | Drawing No. A307261415 |
| | | | Approval | K.W Chan | Remark | Sheet |