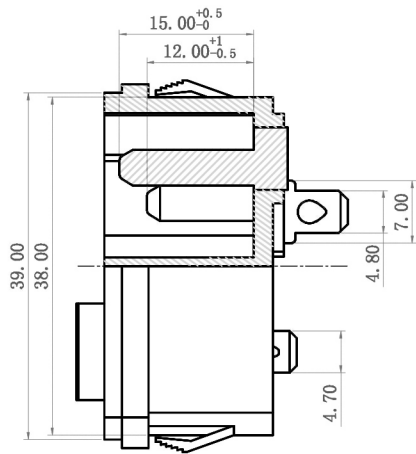
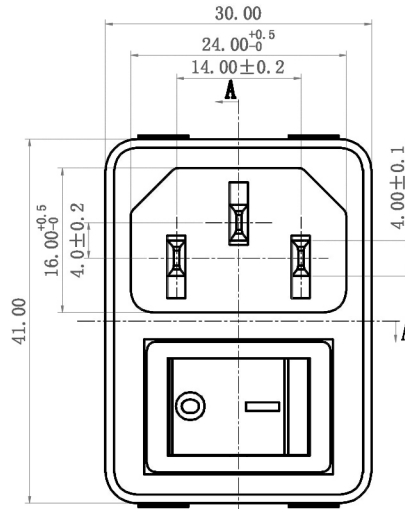
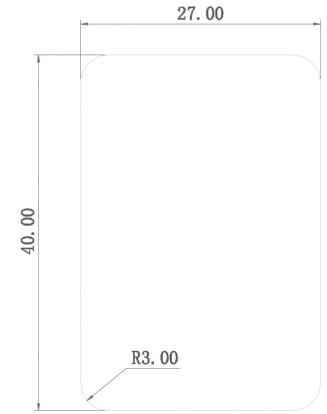
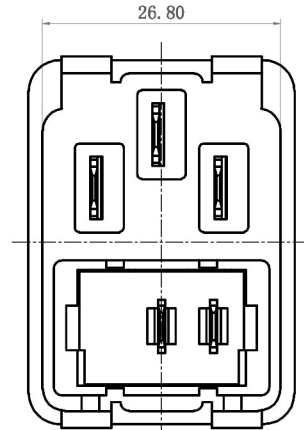


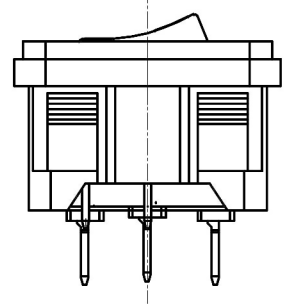
**RoHS  
Compliant  
Drawing For  
Reference Only**



Section A-A



PANEL CUT-OUT



- Technical requirement :
1. This product should meet EU RoHS related requirement.
  2. The surface of plastic part should be without any crackle such as burr,lack,and so on phenomenon.
  3. The surface of metal part should be without any defect such as scaur,nick,oxidation and plating problem.
  4. The electronic performance should be the same as spec.
  5. The un-specified tolerance is :  $<6\pm 0.2$   
 $6\sim 20\pm 0.3$   
 $>20\pm 0.4$

**DCI DRAGON CITY INDUSTRIES LIMITED**

Item Name	AC SOCKET WITH SWITCH	Tolerance :	Design	K.W Law	Remark	Scale
Item No.	AS-241	Unit : mm	Drawing	W.K Yeung	Remark	Material
			Check	K.L Wong	Remark	Drawing No. A402130930
			Approval	K.W Chan	Remark	Sheet