

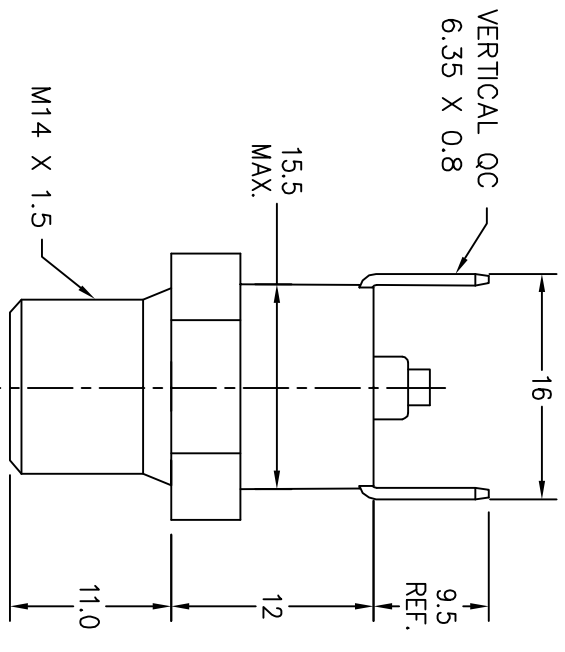
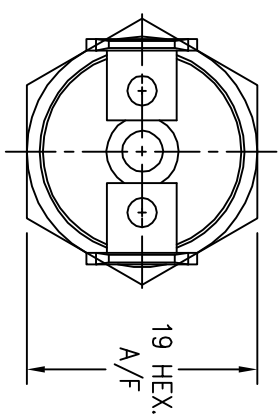


ALL DIMENSIONS ARE FOR REFERENCE ONLY

DO NOT SCALE DRAWING

ALL DIMENSIONS IN mm UNLESS STATED

HONEYWELL
PART NUMBER
2455RD-73270818



NOTE:
M14 X 1.5
NO TERMINAL/HEX. ORIENTATION REQUIREMENT.

REV	CHANGE DOCUMENT	CHANGED BY	CHECK
1			

OPERATING CRITERIA	
VOLT:	12/24VDC
AMPS:	2/1A
OPERATING CRITERIA	
OPEN:	103° ± 7°C
CLOSE:	-RD-

CAP:	MAT'L:
BRKT: B327	MAT'L: BRASS
	PLATING:
TERMINAL:	T147
MATERIAL:	BRASS
PLATING:	-

CODING REQUIREMENTS	
COLOUR:	L103G-7327-818-XXX
(XXX = DATE CODING)	

DESIGN UNITS:	MM
TOLERANCES UNLESS NOTED:	
NO PLACE	X
ONE PLACE	.X
TWO PLACE	.XX
THREE PLACE	.XXX
FOUR PLACE	.XXXX
ANGLES	X

THIRD ANGLE PROJECTION



DRAWN	CXL	29APR08
CHECK	LS	29APR08

TITLE	
2455RD-73270818 THERMOSTAT ASSY.	

Honeywell

THIS DRAWING COVERS A PROPRIETARY ITEM AND IS THE PROPERTY OF HONEYWELL. THIS DRAWING IS NOT TO BE COPIED OR USED WITHOUT THE PERMISSION OF HONEYWELL.

INTERPRET PER ASME Y14.5M-1994 OTHER HONEYWELL ENGINEERING STANDARDS MAY APPLY

SIZE	TYPE	DRAWING NAME	REV
A4	I	080009	1

2D SCALE	NTS	SHEET	1 OF 1

