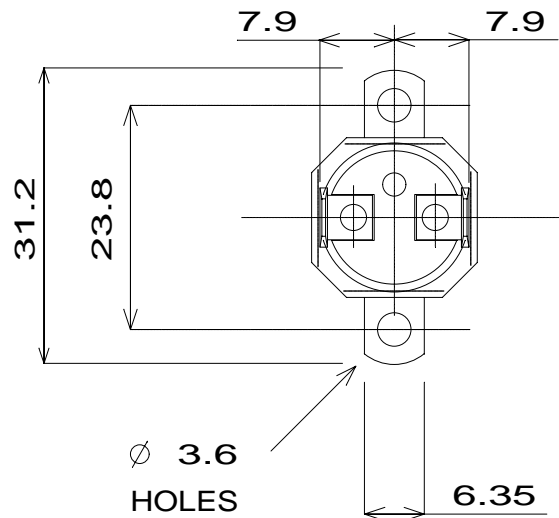


DO NOT SCALE ALL DIMENSIONS ARE FOR REFERENCE ONLY

OPERATING CRITERIA

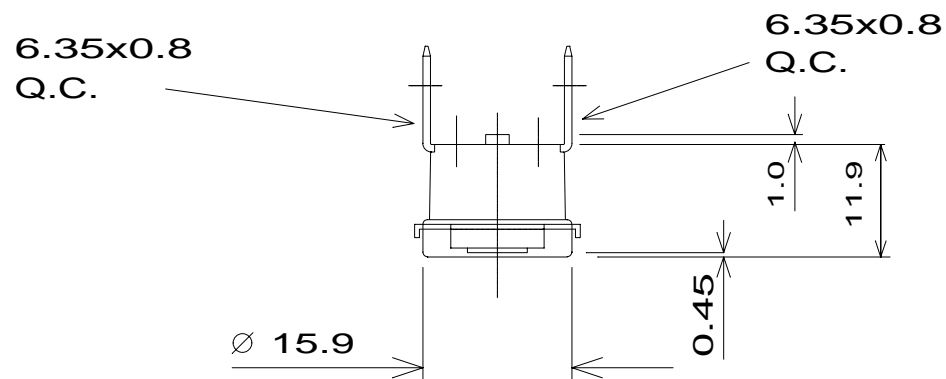


VOLTS; 240 AMPS; 10 HZ;

OPERATING TEMPS. DEG. C


OPEN; 60 ± 3

CLOSE; 50 ± 4



EPOXY SEAL CAP & TERMINALS

NOTE! ORIENTATION OF BRACKET IS NOT FIXED

ISSUE									
MOD No									
MTH/YR									
ELMWOOD DEVICE & UNIQUE PART No							ELMWOOD DRG No.		ISSUE
2455R-9098-444							985075		
 ELMWOOD SENSORS LTD							DATE OF ISSUE STAMP		

CODING REQUIREMENTS

COLOUR; LASER CODE
L60C 9098 444 XXX

(XXX = DATE CODING)

CAP; B200 MAT'L; ALUMINIUM
BRK'T; B203S MAT'L; STEEL
PLATING; NICKEL

TERMINAL; T147 T147
MATERIAL; BRASS BRASS
PLATING;