

DO NOT SCALE ALL DIMENSIONS ARE FOR REFERENCE ONLY

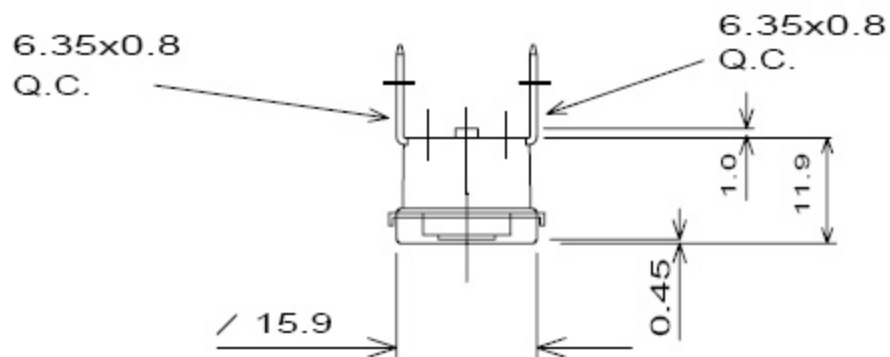
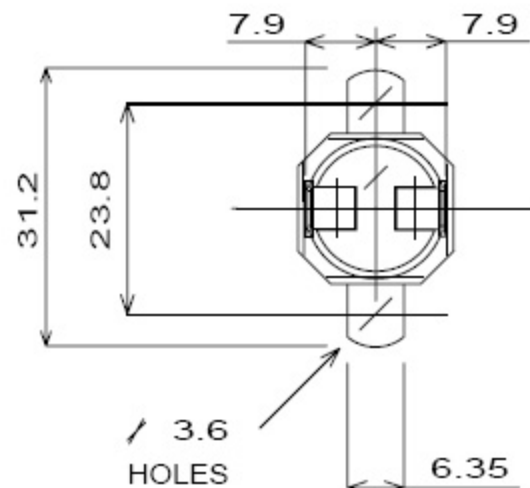
OPERATING CRITERIA

VOLTS; 240          AMPS; 10          HZ;

OPERATING TEMPS. DEG. C

OPEN; 70          + 3

CLOSE; 55          + 5



NOTE! ORIENTATION OF BRACKET IS NOT FIXED

CODING REQUIREMENTS

COLOUR; SILVER OR WHITE  
L70C 98 748          XXX

(XXX = DATE CODING)

CAP; B200          MAT'L; ALUMINIUM  
BRK'T; B203S      MAT'L; STEEL  
                                 PLATING; NICKEL

TERMINAL; T147	T147
MATERIAL; BRASS	BRASS
PLATING; TINNED	TINNED

ISSUE									
MOD No									
MTH/YR									

ELMWOOD DEVICE & UNIQUE PART No  
2455R-98-748

ELMWOOD DRG No.  
880232

ISSUE



ELMWOOD  
SENSORS LTD

DATE OF ISSUE STAMP