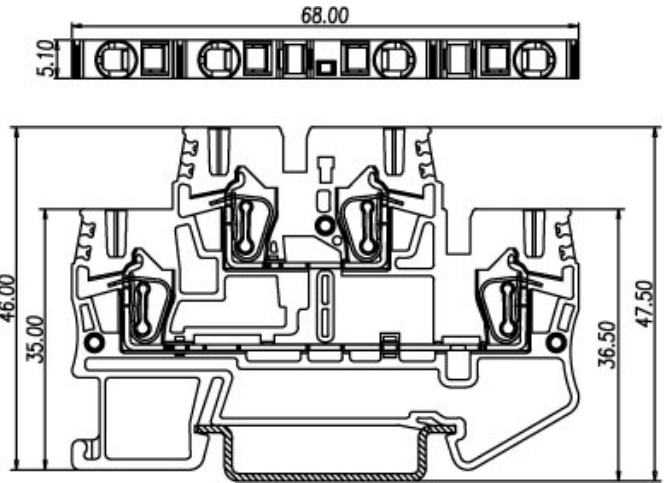
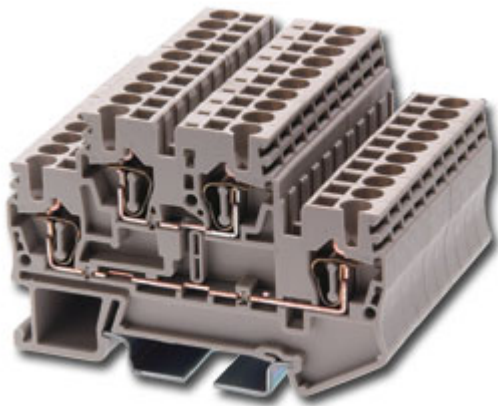


Spring Type DIN Rail Terminal Blocks / AK series



AKK2.5



Approval	Pending	
Technical Data	UL	IEC
Rated voltage	600V	800V
Rated current	20A	24A
Conductor cross-section, solid (AWG / mm ²)	30~12 / 0.5~2.5	
Conductor cross-section, flexible (AWG / mm ²)	30~12 / 0.5~2.5	
Rated impulse withstand voltage	6KV	
Torque (N-m)		
Screw		
Wire strip length	10mm	
Insulating material	PA	
TxHxW (mm)	5.1 x 46 x 68	
Optional color	Cat. No.	
●		
●	AKK2.5-BL	
●		
●		



	Accessories	Cat. No.
End cover		AKK2.5C
Partition		
Small partition		
Insertion bridge	2 way	DSD01-2.502
	3 way	DSD01-2.503
	4 way	DSD01-2.504
	5 way	DSD01-2.505
	10 way	DSD01-2.510
	20 way	DSD01-2.520
Insertion bridge		
Screw-on bridge		
Marking label		TM20 / TM36
Mounting Rail		TS-35
Tool		0.6 x 3.5mm