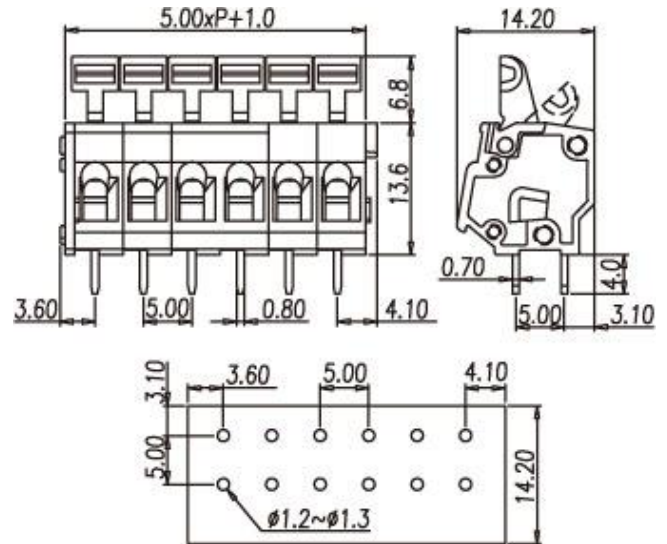


Clamp Spring - Spring type terminal blocks / WK series



WKR500A



Pitch: 5.00mm

Approval		
Technical Data	UL	IEC
Rated voltage	300V	450V
Rated current	15A	24A
Conductor cross-section, solid (AWG/ mm ²)	28~12 / 0.5~2.5	
Conductor cross-section, flexible (AWG/ mm ²)	28~12 / 0.5~2.5	
Rated surge voltage (UL/IEC/Max.)	1.6 / 2.5 / 4 KV	
Wire strip length	5~6mm	
Single Pole	Cat. No.	
	WKR500A-01X	
End Cover	WKR500AC	



Optional color	Cat. No.
●	WKR500A-01X
●	WKR500A-01X-GN
●	WKR500A-01X-RD
●	WKR500A-01X-BL
●	WKR500A-01X-BK
●	WKR500A-01X-OR

Pole	Cat. No.
02	WKR500A-02P
03	WKR500A-03P
04	WKR500A-04P
05	WKR500A-05P
06	WKR500A-06P
07	WKR500A-07P
08	WKR500A-08P
09	WKR500A-09P
10	WKR500A-10P
11	WKR500A-11P
12	WKR500A-12P
:	:
:	:

Optional color	Cat. No.
●	WKR500A-XXP
●	WKR500A-XXP-GN
●	WKR500A-XXP-RD
●	WKR500A-XXP-BL
●	WKR500A-XXP-BK
●	WKR500A-XXP-OR

TEL: +886-2-2908-0614**FAX:** +886-2-2908-8549**E-mail:** info@dinkle.com.tw