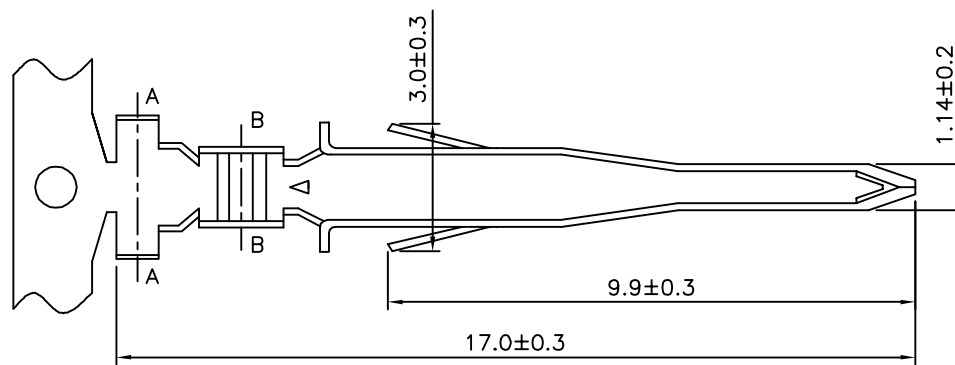
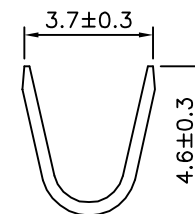


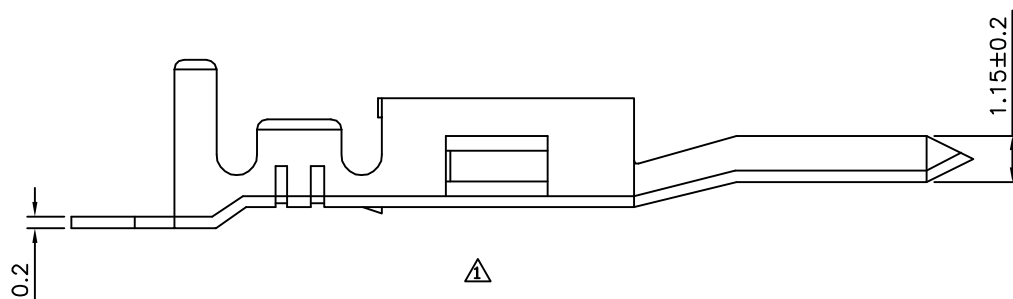
△ SPECIFICATION
 Current Rating: 6~7A AC/DC
 Voltage Rating: 250V AC/DC
 Wire Range: AWG #18~22
 Material: Brass, Tin Plated
 RoHS Compliant



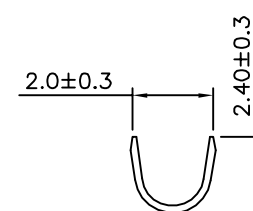
△



△ Section A-A



△



△ Section B-B



A MEMBER OF AUK GROUP

太聯事業股份有限公司
AUK CONTRACTORS CO., LTD.

CATEGORY		APPROVED BY	
		EMILY	
PART No.	MFM-H	CHECKED BY	HZF
DRAWING No.	MFM-H	DRAWING BY	SONG
SCALE	NONE	REV.	A1

UNLESS OTHERWISE SPECIFIED TOLERANCES ARE
 △ 1~10 ±0.2
 10~20 ±0.3
 20~40 ±0.4
 40~ ±0.5



NO.	REV.	REVISIONS	CHK	DATE
△ A1		Modify Data	HZF	07/22/2011
△ A0		NEW RELEASE	BECKY	12/17/2004