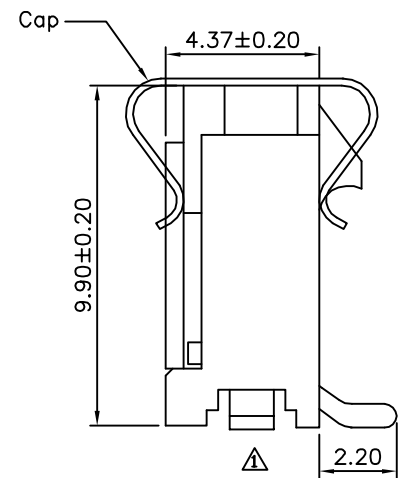
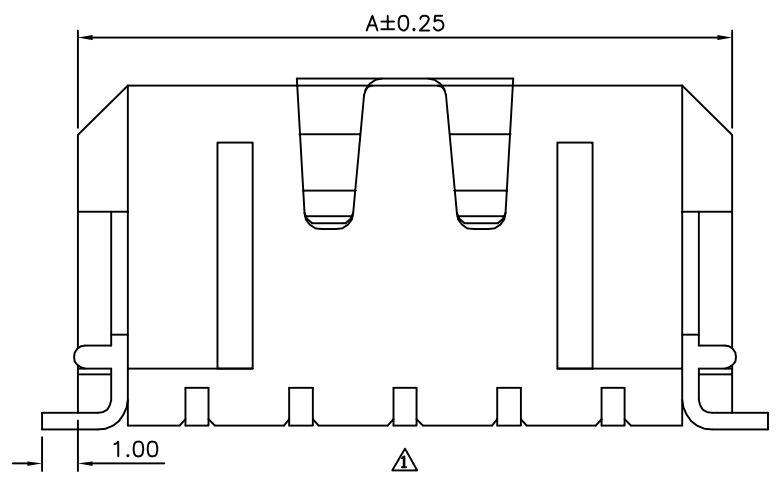
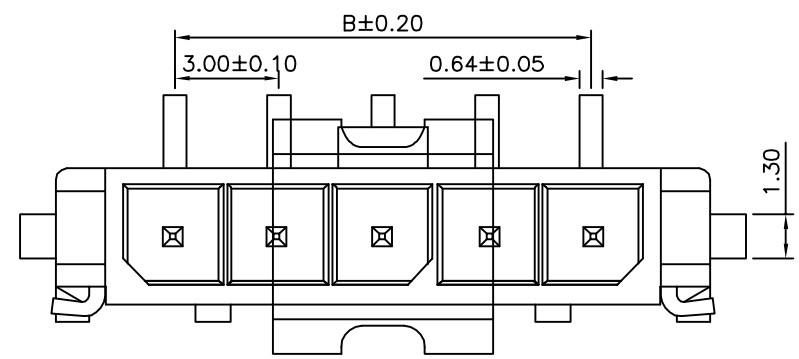


Recommended P.C.B. Layout(Component Side)  
(PCB Thickness:1.57mm)



**SPECIFICATION**

1. General Characteristics  
3.0mm Micro-Fit Wafer 1XXX SMT 180°  
Fitting Nail:SMT Black Insulator Tin Plated  
With Cap Tape&Reel 250PCS/Reel

2. Material&Finish  
Housing:LCP(UL94V-0),Black  
Contact:Brass,Tin Plated

3. Electrical Characteristics  
Current Rating:5A AC,DC  
Voltage Rating:250V AC,DC  
Contact Resistance:10 Milliohms Max.  
Insulation Resistance:1000 Megaohms Min.  
Withstand Voltage:1500V AC/Minute

4. Environmental Characteristics  
Temperature Range:-25°C~+85°C

5. RoHS Compliant

MIF 1 X XX P V C - R2H5 - H  
(1) (2) (3) (4) (5)(6) (7) (8)

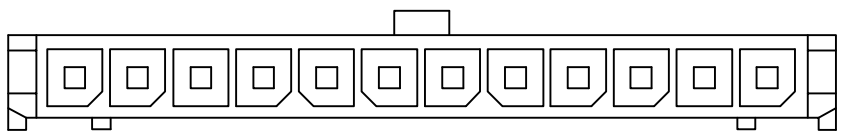
- (1) MIF:3.0mm Micro-Fit Series
- (2) 1:Singal Row
- (3) XX:No. Of Position/Per Row
- (4) P:Male
- (5) V:SMT Straight Fitting Nail:SMT
- (6) C:With Cap
- (7) R2H5:Tape&Reel 250 PCS/Reel
- (8) H:RoHS Compliant

| Pin | A     | B     |
|-----|-------|-------|
| 02  | 6.85  | 3.00  |
| 03  | 9.85  | 6.00  |
| 04  | 12.85 | 9.00  |
| 05  | 15.85 | 12.00 |
| 06  | 18.85 | 15.00 |
| 07  | 21.85 | 18.00 |
| 08  | 24.85 | 21.00 |
| 09  | 27.85 | 24.00 |
| 10  | 30.85 | 27.00 |
| 11  | 33.85 | 30.00 |
| 12  | 36.85 | 33.00 |

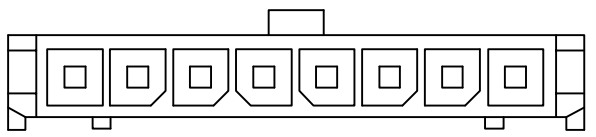
**AUK** A MEMBER OF AUK GROUP  
**太聯事業股份有限公司**  
**AUK CONTRACTORS CO., LTD.**

|                                  |      |                      |    |   |
|----------------------------------|------|----------------------|----|---|
| CATEGORY                         |      | APPROVED BY<br>EMILY |    | UNLESS OTHERWISE SPECIFIED TOLERANCES ARE<br>X ±0.30<br>Y ±0.25<br>.XX ±0.20<br>.XXX ±0.015 |
| PART No.<br>MIF1XXXPVC-R2H5-H    |      | CHECKED BY<br>HZF    |    |   |
| DRAWING No.<br>MIF1XXXPVC-R2H5-H |      | DRAWING BY<br>HAO    |    |   |
| SCALE                            | NONE | REV.                 | A1 |   |
|                                  |      | UNIT                 | mm |   |

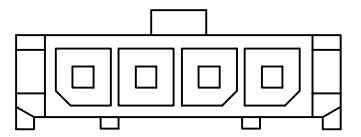
| NO. | REV. | REVISIONS                                       | CHK | DATE       |
|-----|------|---|-----|------------|
| A1  |      | Modify P/N:MIF1XXXPV-H<br>--> MIF1XXXPVC-R2H5-H | HZF | 12/12/2014 |
| A0  |      | NEW RELEASE                                     | HZF | 09/26/2012 |



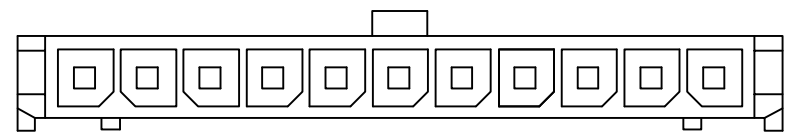
1X12P



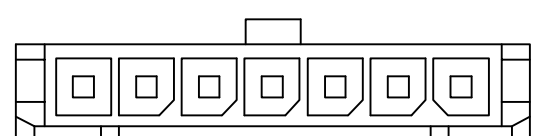
1X08P



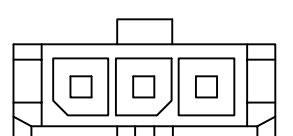
1X04P



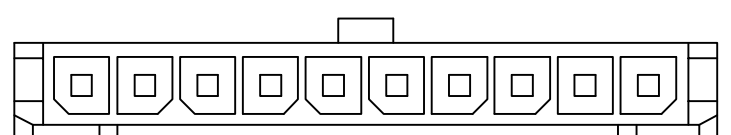
1X11P



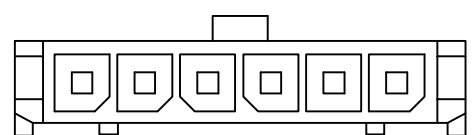
1X07P



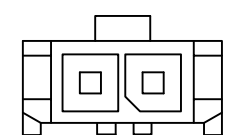
1X03P



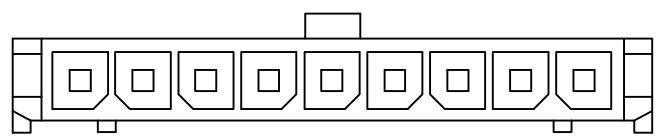
1X10P



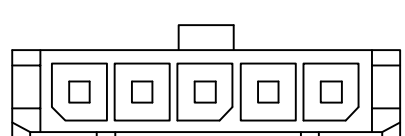
1X06P



1X02P



1X09P



1X05P



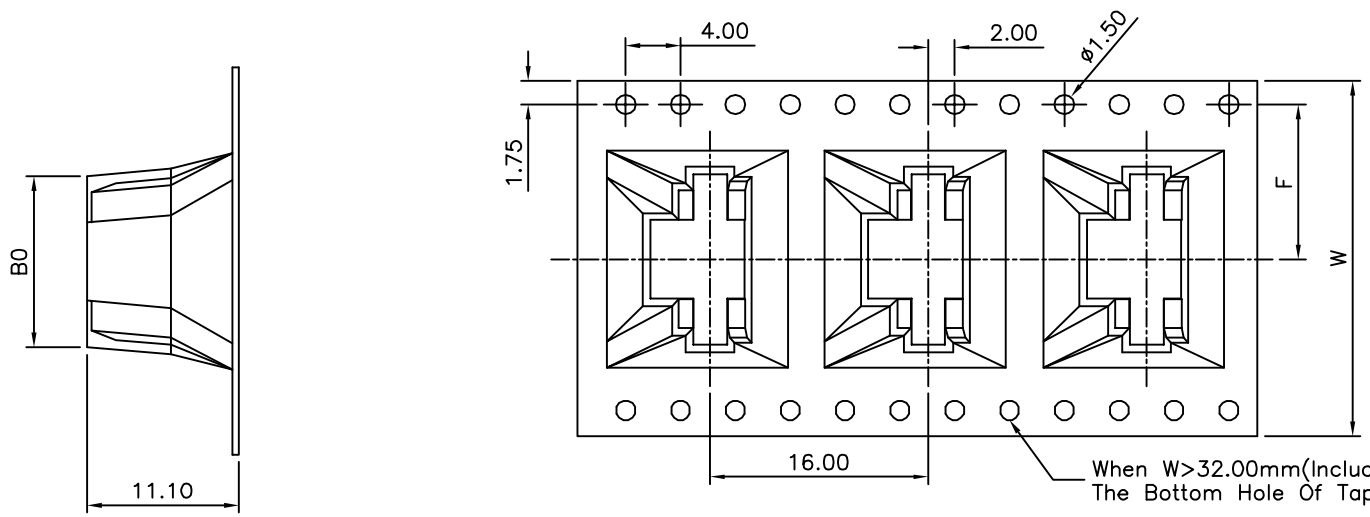
A MEMBER OF AUK GROUP  
**太聯事業股份有限公司**  
**AUK CONTRACTORS CO., LTD.**

|                               |    |                |  |
|-------------------------------|----|----------------|--|
| CATEGORY                      |    | APPROVED BY    |  |
| PART No.  MIF1XXXPVC-R2H5-H   |    | EMILY          |  |
| DRAWING No. MIF1XXXPVC-R2H5-H |    | CHECKED BY HZF |  |
| SCALE NONE                    |    | DRAWING BY HAO |  |
| REV.                          | A1 | UNIT mm        |  |

UNLESS OTHERWISE SPECIFIED TOLERANCES ARE  
 X. ±0.30  
 .X ±0.25  
 .XX ±0.20  
 .XXX ±0.015

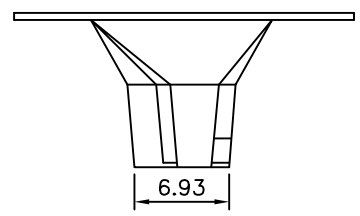
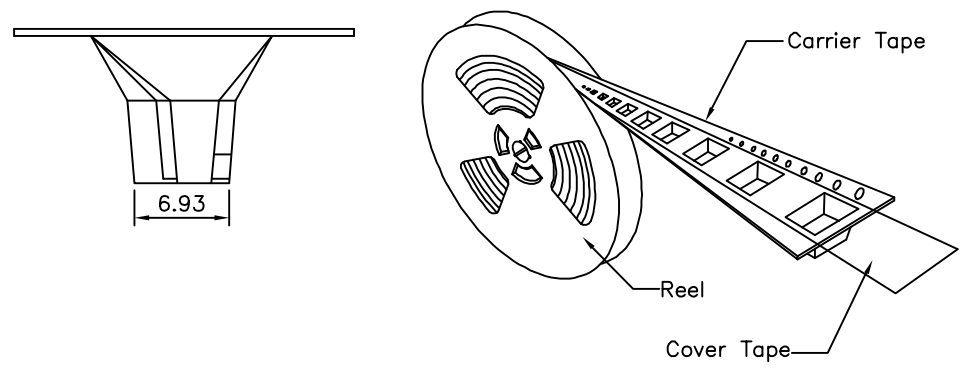
|     |      |  |     |            |
|-----|------|--|-----|------------|
| NO. | REV. | REVISIONS                                    | CHK | DATE       |
|     | A1   | Modify P/N:MIF1XXXPV-H --> MIF1XXXPVC-R2H5-H | HZF | 12/12/2014 |
|     | A0   | NEW RELEASE                                  | HZF | 09/26/2012 |

**SPECIFICATION**  
 Q'ty:250 PCS/Reel  
 RoHS Compliant



When W>32.00mm(Include W=32.00mm)  
 The Bottom Hole Of Tape Will Be Shown

Gather Material Direction



| Pin | W    | F     | BO    |
|-----|------|-------|-------|
| 02  | 24.0 | 11.50 | 12.30 |
| 03  | 32.0 | 14.20 | 15.50 |
| 04  | 32.0 | 14.20 | 18.50 |

**AUK** A MEMBER OF AUK GROUP  
**太聯事業股份有限公司**  
**AUK CONTRACTORS CO., LTD.**

|                               |    |                |    |   |
|-------------------------------|----|----------------|----|---|
| CATEGORY                      |    | APPROVED BY    |    | UNLESS OTHERWISE SPECIFIED TOLERANCES ARE<br>X ±0.30<br>Y ±0.25<br>.XX ±0.20<br>.XXX ±0.015 |
| PART No. MIF1XXXPVC-R2H5-H    |    | EMILY          |    |   |
| DRAWING No. MIF1XXXPVC-R2H5-H |    | CHECKED BY HZF |    |   |
| SCALE NONE                    |    | DRAWING BY HAO |    |   |
| REV.                          | A1 | UNIT           | mm |   |

|      |      |  |     |            |
|------|------|--|-----|------------|
| NO.  | REV. | REVISIONS                                    | CHK | DATE       |
| △ A1 |      | Modify P/N:MIF1XXXPV-H --> MIF1XXXPVC-R2H5-H | HZF | 12/12/2014 |
| △ A0 |      | NEW RELEASE                                  | HZF | 09/26/2012 |