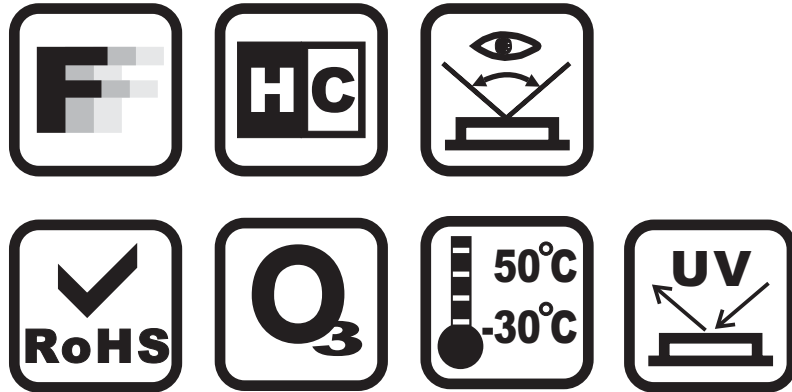




classic mono LCDs

LCD PANEL SPECIFICATION



ITEM NUMBER: FDP0676B-RTBPFY

ESTABLISHED: 2011.07.27

ISSUED BY: *魏燕东*

CHECKED BY: *李长良*

APPROVED BY:

1. The following icons are absolutely designed by FORDATA independently in 2007-SEP. They are not in common use in the LCD industry yet but just used for marking out FORDATA products' characteristics quickly and simply without any special meaning. FORDATA reserves the composing right and copyright. No one else is allowed to adopt these icons without FORDATA's approval.
2. The ISO9001 logo used in this document is authorized by SGS (www.sgs.com). FORDATA had already successfully passed the strict and professional ISO9001:2000 Quality Management System Certification and got the certificate (No.: CN07/00404)
3. The technologies/techniques/crafts which denoted by the following icons are not exclusively owned by FORDATA, but also shared by FORDATA's LCD strategic cooperators, however all these technologies/techniques/crafts have been finally confirmed by FORDATA's professional engineers and QC department.
4. As the difference in test standard and test conditions, also FORDATA's insufficient familiarity with the actual LCD using environment, all the referred information in this DATASHEET (including the icons) only have two functions:
 - 4.1: providing quick reference when you are judging whether or not the product meets your requirements.
 - 4.2: listing out definitely the tolerance.

FORDATA declares seriously: you should first test the corresponding sample(s) before signing the formal FORDATA SAMPLE APPROVAL document rather than consider this DATASHEET as the standard for judging whether or not the LCD meets your requirements. Once you instruct FORDATA to a mass-production without definite demand for providing sample before, FORDATA will disclaim all responsibility if the mass-production is proved not meeting with your requirements.

5. The sequence of the icons is random and doesn't indicate the importance grade.
6. Icons explanation



classic mono LCDs

FORDATA's 2006 version logo. FORDATA is an integrated manufacturer of flat panel display (FPD). FORDATA supplies TN, HTN, STN, FSTN monochrome LCD panel; COB, COG, TAB LCD module; and all kinds of LED backlight.



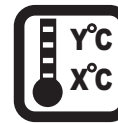
3TIMES 100% QC EXAMINATION

This icon on the cover indicates the product has passed FORDATA's thrice 100% QC. Otherwise not.



FAST RESPONSE TIME

This icon on the cover indicates the product is with high response speed; Otherwise not.



OPERATION TEMPERATURE RANGE

This icon on the cover indicates the operating temperature range (X-Y).



HIGH CONTRAST

This icon on the cover indicates the product is with high contrast; Otherwise not.



RoHS COMPLIANCE

This icon on the cover indicates the product meets ROHS requirements; Otherwise not.



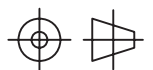
WIDE VIEWING SCOPE

This icon on the cover indicates the product is with wide viewing scope; Otherwise not.



Anti UV VERSION

This icon on the cover indicates the product is against UV line. Otherwise not.



CODE SYSTEM

MODIFICATION RECORD

1	2	3	4	5	6	7	8	9	10
FD	P	0001	A	F	Y	B	N	W	Y

NO.	REMARK	CODE	DESCRIPTION
1	COMPANY ABBREVIATION	FD	
2	BACKLIGHT ABBREVIATION	P	
3	SERIAL CODE	0001~9999	
4	VERSION CODE	A~Z	
5	DISPLAY MODE	R	Positive, Reflective
		F	Positive, Transflective
		M	Positive, Transmissive
		N	Negative, Transmissive
		E	Negative, Transflective
6	LCD TYPE	T	TN Type
		H	HTN Type
		Y	Yellow-Green STN Type
		G	Gray STN Type
		B	Blue STN Type
		F	FSTN Type
7	VIEWING DIRECTION	B	6:00
		T	12:00
		R	3:00
		L	9:00
		P	To be perpendicular to the LCD panel surface
8	CONNECTION	N	None
		P	PIN
		Z	Heat Seal
9	OPERATION TEMPERATURE	W	-20 ~ 70
		S	0 ~ 50
		E	-10 ~ 60
		F	-30 ~ 80
10	RoHS COMPLIANCE	Y	Yes
		N	No

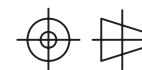
NO.	DATE	MARK	DESCRIPTION	PAGE	APPROVED
1	110727		Initial Drawing finished	ALL	

CUSTOMER COMMENTS:

YOUR SIGNATURE: _____

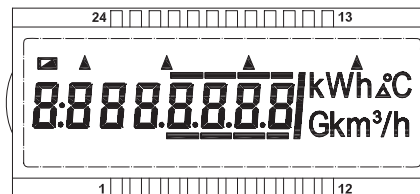
APPROVAL DECLARATION: Your signature here indicates that you have checked this drawing and absolutely confirmed it. Meanwhile, your signature shows that you authorized FORDATA to arrange samples tooling accordingly to this approved drawing. In case of any wrong tooling caused by this approved drawing, FORDATA will disclaim all responsibility (at least but not limit to) including returning tooling charge or retooling for free.

BOOKBINDING AREA



BOOKBINDING AREA

DISPLAY MODE	POSITIVE REFLECTIVE/TN	VIEWING ANGLE	6:00	OPERATING TEMP.	-30°C ~ 50°C	DUTY	1/4
CONNECTION	PIN TYPE	DRIVING VOLTAGE	3.0V	STORAGE TEMP.	-40°C ~ 70°C	BIAS	1/3
REMARKS	NONE						

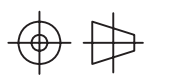
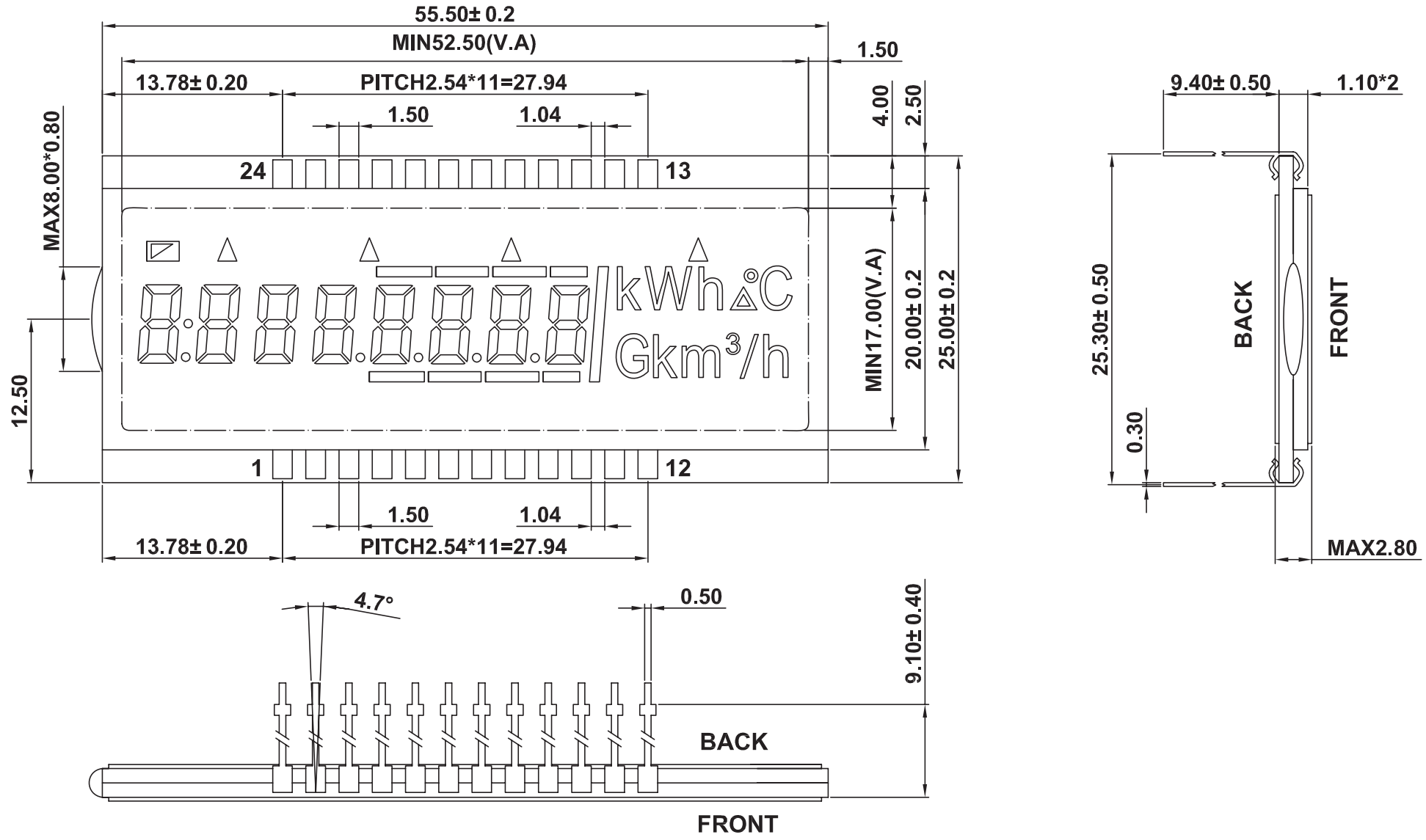


1:1 SCALE

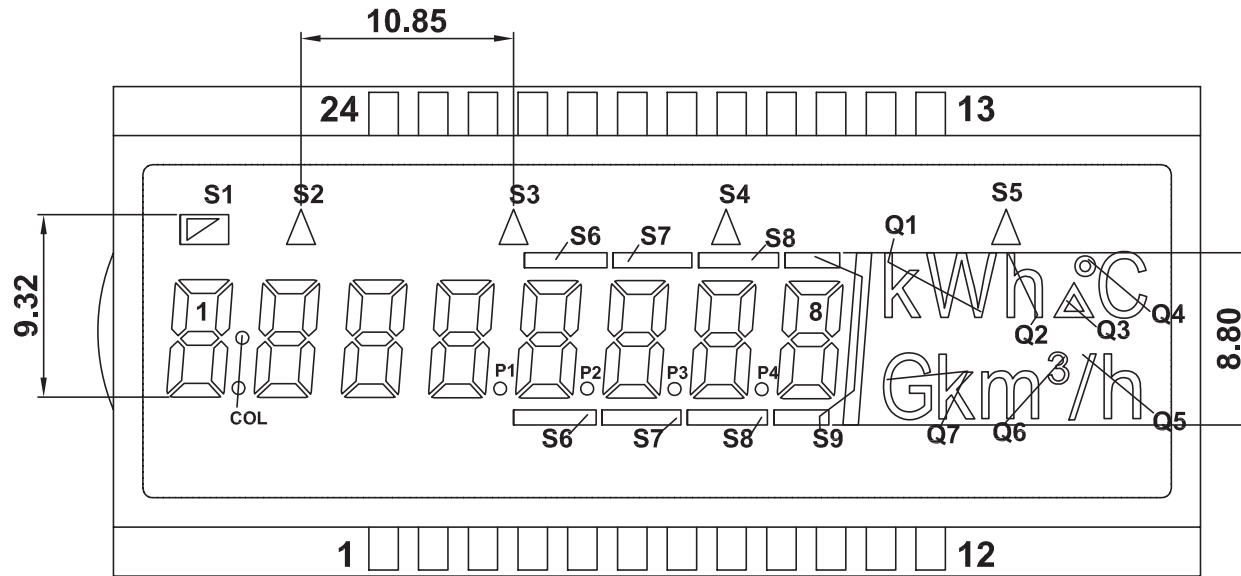


DISPLAY MODE	POSITIVE REFLECTIVE/TN	VIEWING ANGLE	6:00	OPERATING TEMP.	-30°C ~ 50°C	DUTY	1/4
CONNECTION	PIN TYPE	DRIVING VOLTAGE	3.0V	STORAGE TEMP.	-40°C ~ 70°C	BIAS	1/3
REMARKS	NONE						

BOOKBINDING AREA



DISPLAY MODE	POSITIVE REFLECTIVE/TN	VIEWING ANGLE	6:00	OPERATING TEMP.	-30°C ~ 50°C	DUTY	1/4
CONNECTION	PIN TYPE	DRIVING VOLTAGE	3.0V	STORAGE TEMP.	-40°C ~ 70°C	BIAS	1/3
REMARKS	NONE						



PIN	1	2	3	4	5	6	7	8	9	10	11	12	13	14	15	16	17	18	19	20	21	22	23	24
COM1	COM1				1 F	1 A	6 F	6 A	7 F	Q7	Q1		S9	8 A	8 F	7 A	5 A	5 F	4 A	4 F	3 A	3 F	2 A	2 F
COM2		COM2			1 G	1 B	6 G	6 B	7 G	Q2	S5		S8	8 B	8 G	7 B	5 B	5 G	4 B	4 G	3 B	3 G	2 B	2 G
COM3			COM3		1 E	1 C	6 E	6 C	7 E	Q6	Q3		S7	8 C	8 E	7 C	5 C	5 E	4 C	4 E	3 C	3 E	2 C	2 E
COM4				COM4	1 D	COL	6 D	P3	7 D	Q5	Q4	S4	S6	S3	8 D	P4	P2	5 D	P1	4 D	S2	3 D	S1	2 D

BOOKBINDING AREA

