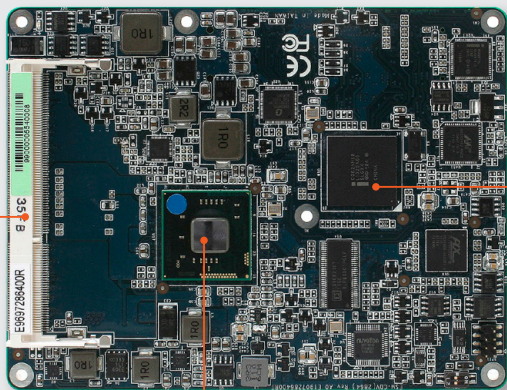




One 204-pin SODIMM Up to 4GB DDR3 800/1066 SDRAM



Intel® Atom D2550 Processor

Intel® NM10 Chipset

### Features

- Intel® Atom™ D2550 Processor (N2800 and N2600 for Optional)
- Intel® NM10 Chipset
- One 204-pin SODIMM Sockets Up to 4GB DDR3 800/ 1066 SDRAM
- Dual-channel 18/ 24-bit LVDS
- Intel® High Definition Audio
- Intel® 82574L Gigabit Ethernet
- 4 PCIe1, 2 PCI, LPC, SMBUS
- 2 SATA, 1 PATA, 8 USB, 8-bit GPIO
- Type 2 Pin-out

### Specifications

#### System

|                  |  |
|------------------|--|
| • CPU            | Intel® Atom D2550 Processor (N2800 and N2600 for Optional)       |
| • BIOS           | AMI 16Mbit SPI BIOS  |
| • System Chipset | Intel® NM10  |
| • System Memory  | One 204-pin SODIMM Sockets Support Up to 4GB DDR3 800/1066 SDRAM |
| • Expansion      | 4 x PCIe1, 2 x PCI   |

#### I/O

|       |  |
|-------|--|
| • MIO | 2 x SATA, 1 x PATA, LPC, SMbus/ I <sup>2</sup> C Bus |
| • USB | 8 x USB 2.0  |
| • DIO | 4-bit GPI and 4-bit GPO                              |

#### Display

|                  |   |
|------------------|---|
| • Chipset        | D2550/ N2800/ N2600 Integrated Graphics<br>One CH-7511B Onboard                       |
| • Resolution     | VGA Mode: 1920 x 1200<br>LVDS Mode: 1920 x 1080 (D2550)<br>1920 x 1080 (N2600/ N2800) |
| • LVDS Interface | Dual-channel 24-bit LVDS  |

#### Audio Interface

|             |                              |
|-------------|------------------------------|
| • Chipset   | Intel® NM10 Integrated       |
| • Interface | Intel® High Definition Audio |

#### Ethernet

|                      |   |
|----------------------|---|
| • LAN                | Intel® 82574L Gigabit Ethernet Controller         |
| • Ethernet Interface | 10/ 100/ 1000 Base-Tx Gigabit Ethernet Compatible |

#### Mechanical & Environmental

|                         |   |
|-------------------------|---|
| • Power Requirement     | +9 ~ +19V   |
| • ACPI                  | Single Power ATX Support S0, S3, S4, S5<br>ACPI 3.0 Compliant |
| • Power Type            | AT/ ATX   |
| • Operating Temperature | 0 ~ 60°C (32 ~ 140°F)   |
| • Storage Temperature   | -40 ~ 75°C (-40 ~ 167°F)                                      |
| • Operating Humidity    | 0% ~ 90% Relative Humidity, Non-condensing                    |
| • Size (L x W)          | 5" x 3.7" (125mm x 95mm)                                      |
| • Weight                | 0.44lbs (0.2kg)   |

- 1 Embedded System
- 2 Qseven Module
- 3 ETX/XTX COM Express
- 4 3.5" SBC
- 5 EPIC
- 6 5.25" SBC
- 7 ATX
- 8 Micro ATX
- 9 Mini ITX
- 10 Nano ITX
- 11 ACP
- 12 Rack Mount System
- 13 Mini ITX System
- 14 Peripherals
- 15 Index

### Ordering Information

- ESM-CDV  
Intel® Atom™ D2550 COM Express Module with Intel® NM10 Chipset
- EEV-EX13  
COM Express Carrier Board for Evaluation