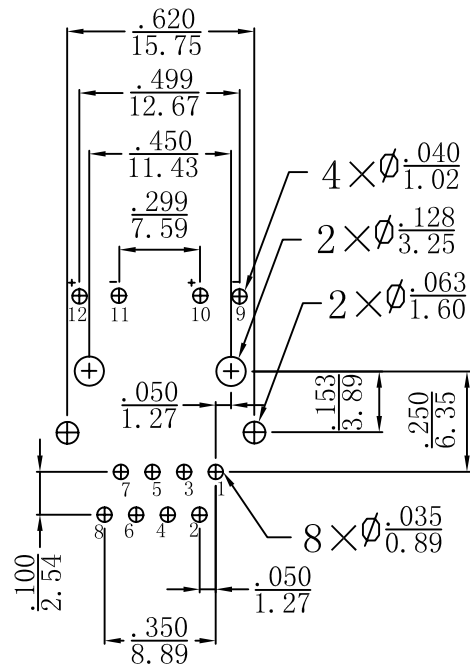
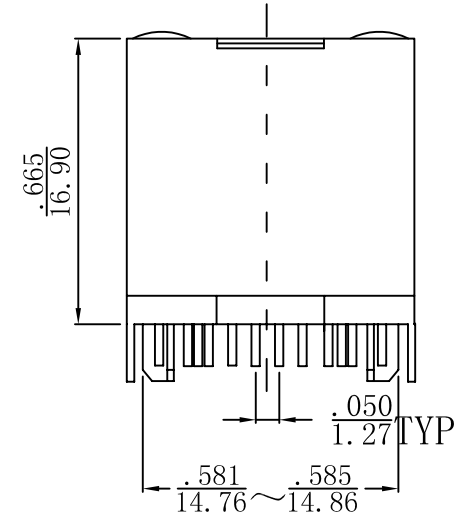
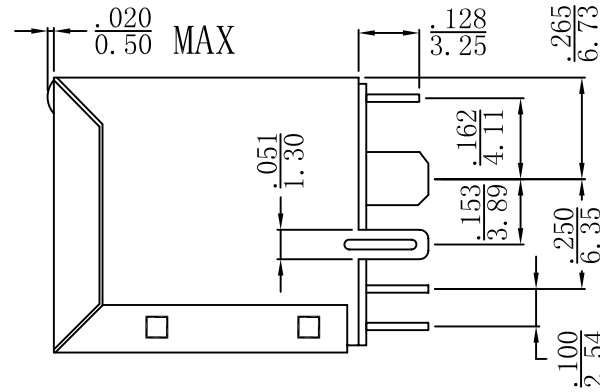
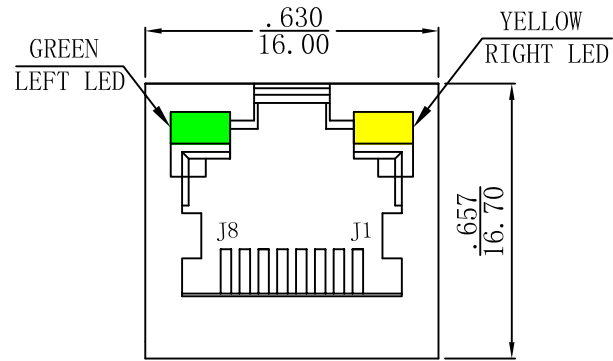
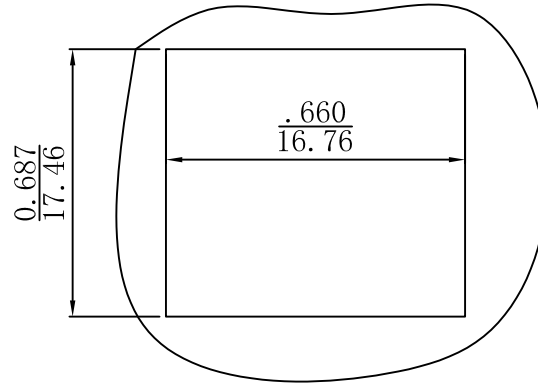


# Mechanical:

REV.	ECN NO.	DESCRIPTION	DATE	APPD
A	REL		2010/09/15	



SUGGESTED PCB LAYOUT (TOP VIEW)



RECOMMENDED PANEL CUTOUT DIMENSION



## NOTES:

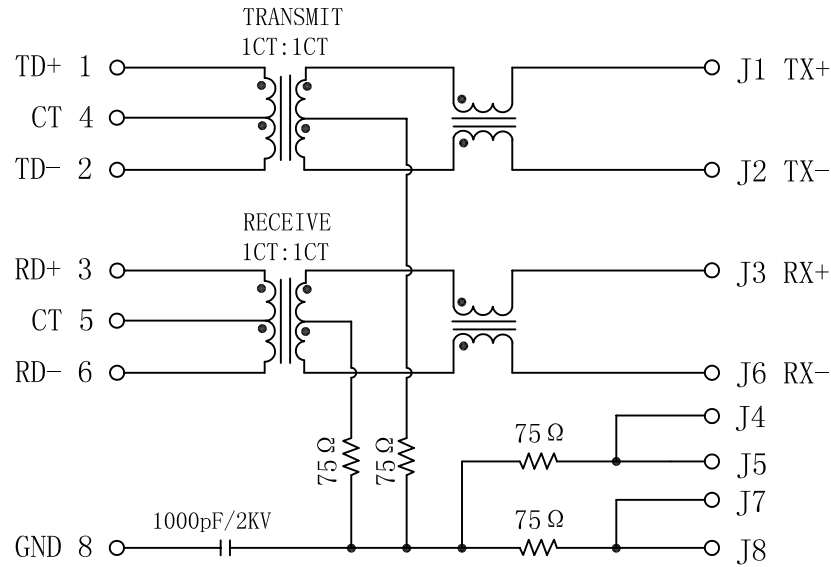
1. Designed to support application, such as SOHO (ADSL modems), LAN-on-Motherboard (LOM), hub and Switches.
2. Meets IEEE 802.3 specification
3. Connector Materials:  
Housing: Thermoplastic UL94V-0  
Contact/Shield: Copper alloy  
Shield plating: Nickel  
Contact plating: Gold 6 micro-inches min. In contact area.
4. Wave solder tip temperature: 265°C Max  
Wave solder tip temperature time: 5 Sec Max
5. UL Certification: File Number E321120

X:X	±0.20	APPD:	Trxcom	
X:XX	±0.10	CHKD:	ShenZhen Trxcom Electronics Co., Ltd	
X:XXX	±0.05	DR: C. H. Y	Title: Vertical RJ45 Connector With 10/100 Magnetic	
ANGLES	±1°	UNIT: Inches/mm	PART NO.: TRJDO011BHNL	
	SCALE: 2/1	SHEET: 1/2	REV: A	DWG NO.: TRC10091510

# Schematic:

REV.	ECN NO.	DESCRIPTION	DATE	APPD
A	REL		2010/09/15	

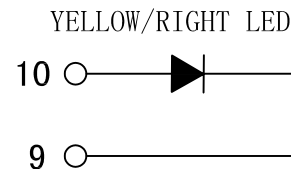
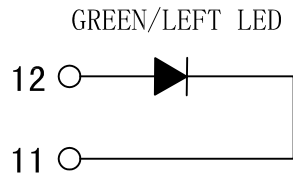
PC BOARD CONNECTIONS



## Electrical Specifications @25°C

- Turns Ratio:  
TX=1CT:1CT      RX=1CT:1CT
- Inductance: 350uH Min  
@100KHz 0.1V 8mA DC Bias
- Insertion Loss:  
1-65MHz:-1.0dB Max
- Return Loss(dB Min):  
1-30MHz:-18      40MHz:-16  
50MHz:-12      60MHz:-10
- Crosstalk(dB Min):  
30MHz:-40      60MHz:-35  
100MHz:-30
- CMR: (dB Min):  
30MHz:-30      60MHz:-20  
100MHz:-20
- Hipot: 1500Vrms
- Operating Temperature: 0°C ~ 70°C.

RJ45 CONNECTOR



X:X	±0.20	APPD:	<i>Trxcom</i>	
X:XX	±0.10	CHKD:	ShenZhen Trxcom Electronics Co., ltd	
X:XXX	±0.05	DR: C. H. Y	Title: Vertical RJ45 Connector With 10/100 Magnetic	
ANGLES	±1°	UNIT: Inches/mm	PART NO.:	TRJD0011BHNL
	SCALE: 2/1	SHEET: 2/2	REV: A	DWG NO.: TRC10091510