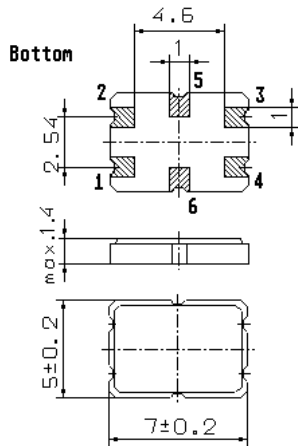


Specification for monolithic crystal filter:

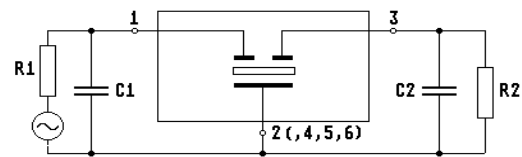
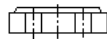
**MQF 100.0-0800/01**

## 1. General

### 1.1. Case:



**GS 2**



- |                                   |                   |
|-----------------------------------|-------------------|
| 1.2. Type name:                   | MQF 100.0-0800/01 |
| 1.3. Number of poles:             | 2                 |
| 1.4. Operating temperature range: | -20°C to +70°C    |
| 1.5. Operable temperature range:  | -20°C to +70°C    |
| 1.6. Storage temperature range:   | -45°C to +85°C    |

## 2. Electric values

- |   |                               |
|---|-------------------------------|
| 2.1. Nominal centre frequency fo:                 | 100.0 MHz                     |
| <b>2.2. Pass band</b>                             |                               |
| 2.2.1. Bandwidth between 3 dB - frequencies:      | > ± 4 kHz                     |
| 2.2.2. Ripple:                                    | < 1.0 dB at fo ± 2.0 kHz      |
| 2.2.3. Insertion loss:                            | < 4.0 dB                      |
| ( measured on smallest attenuation in pass band ) |                               |
| <b>2.3. Stop band</b>                             |                               |
| 2.3.1. fo ± 25 kHz                                | > 20 dB                       |
| 2.3.2. fo ± 50 kHz                                | > 30 dB                       |
| 2.3.3. Alternate attenuation:                     | > 40 dB (except spurious)     |
| 2.4. Terminating impedance ( input and output ):  | 800 Ω // 0.65 pF              |
| 2.5. Nominal input power level                    | -10 dBm                       |
| 2.5.1. Maximum input power level                  | + 0 dBm                       |
| 3. Marking on the case:                           | M100A<br>tft datecode         |
| 4. Environment conditions:                        | according to Telefilter CF001 |

Edited by: \_\_\_\_\_ date: \_\_\_\_\_ name: \_\_\_\_\_