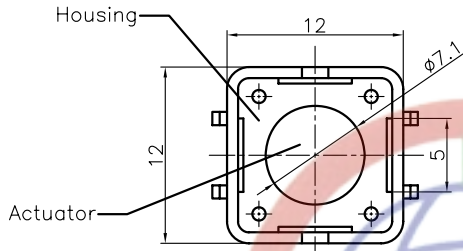


REV.	DESCRIPTION	DRAWN	CHECKED	APPROVED
A	NEW RELEASE	HP 23/06/05		

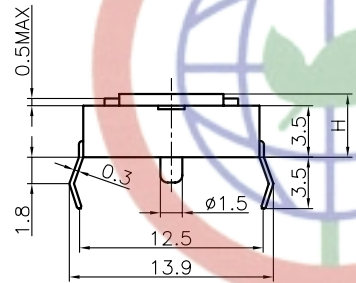


NOTES:

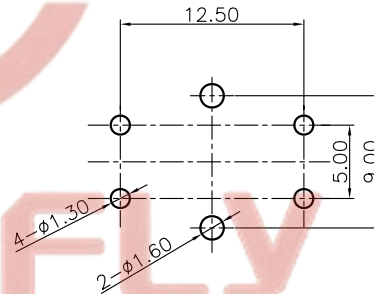
1. SPECIFICATIONS

- switch function: Single pole Single throw
- contact rating: 50mA at 12vdc
- insulation resistance: 100MΩ min at 500vdc
- contact resistance: 100mΩ max
- operating life: 100,00 cycles
- operating force: see below

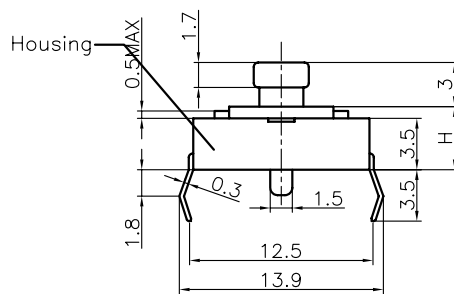
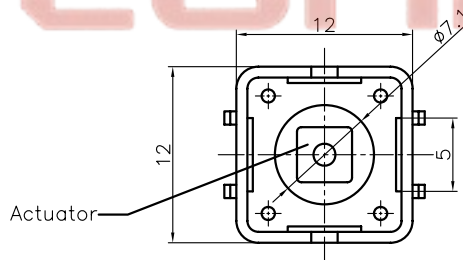
- stop strength: place the switch such that vertical, a static load of 3kgf shall be applied in the direction of stem, operation for a period of 15 secs.
- stroke: $(6 \times 6) 0.25^{+0.2mm/-0.1mm} (12 \times 12) 0.35 \pm 0.1mm$
- operation temperature range: -20°C to 70°C
- storage temperature range: -20°C to +70°C
- wave soldering: recommended solder temperature at 500°F (260°C) max. 5 seconds, subject to pcb 1.6mm thickness.
- hand soldering: use soldering iron of 30 watts, controlled at 608°F (320°C) approximately 2 seconds while applying solder.



WITHOUT COVER

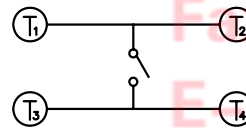


RECOMMEND P.C.B.LAYOUT
TOLERANCE=±0.05



WITH COVER

SCHMATIC



3. PRODUCT NUMBER CODE:
DS1041 - X X X X X X

- Cover type
X: W/O cover
S: W/ cover
- Packing type
A: polybag
B: tube
- Actuator color
U: blue K: black N: brown R: red
S: Salmon Y: yellow
- Housing color
U: blue K: black N: brown R: red
S: Salmon Y: yellow
- Profile Height (DIM. H)
1: 4.3mm 2: 5.0mm 3: 7.0mm
4: 7.3mm 5: 9.5mm 6: 13.0mm 7: 7.5mm
- Size
2: 12mm X 12mm

Tel: 86-574-63510817
Fax: 86-574-63510817
Email: sale@zhenqin.com.cn
Http://www.connfly.com

GENERAL TOLERANCE	ANGLE TOLERANCE	PROJECTION	TITLE	TACT SWITCH DIP TYPE
X. ±0.60	X. ±5°	mm		
.X ±0.38	.X ±3°		SHEET SIZE	A4
.XX ±0.25	.XX ±2°		SERIES	DS1041
DRAWING TYPE	CUSTOMER	晨翔电子有限公司 CONNFLY CONNFLY ELECTRONIC CO. LTD		
SCALE	1:1 SHEET 1 OF 1			
DRAWING NO.	C-DS1041-XXXXXX			