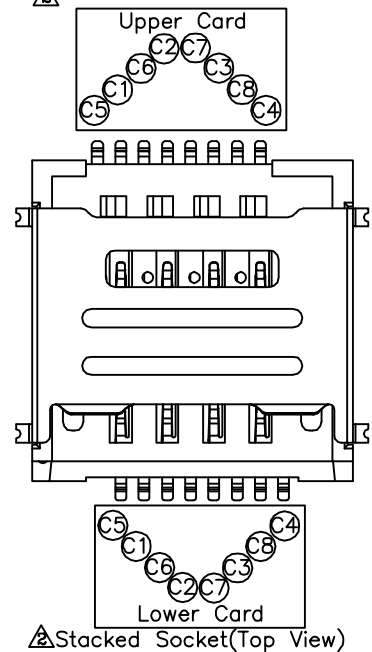
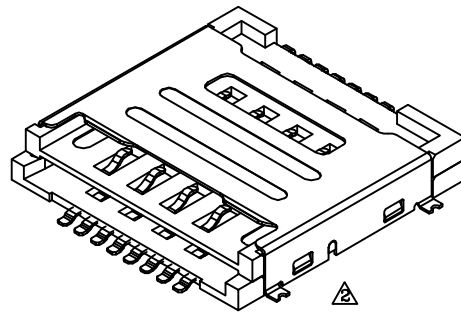
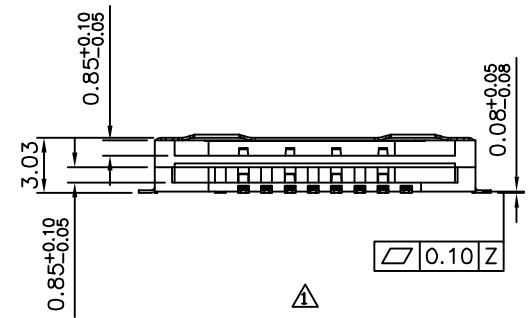


Recommended P.C.B. Layout (Top View)
(PCB Board Tolerance ±0.05)



Stacked Socket (Top View)



SPECIFICATION

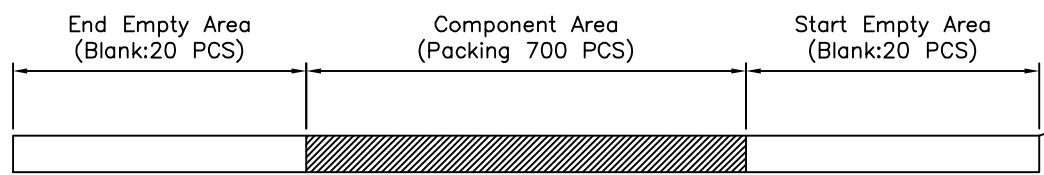
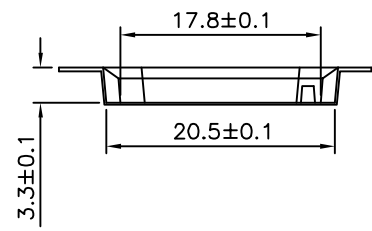
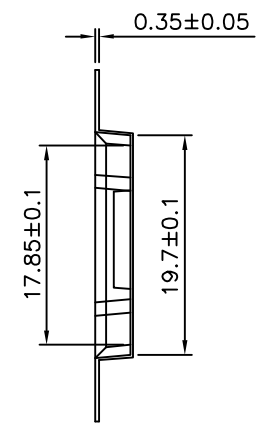
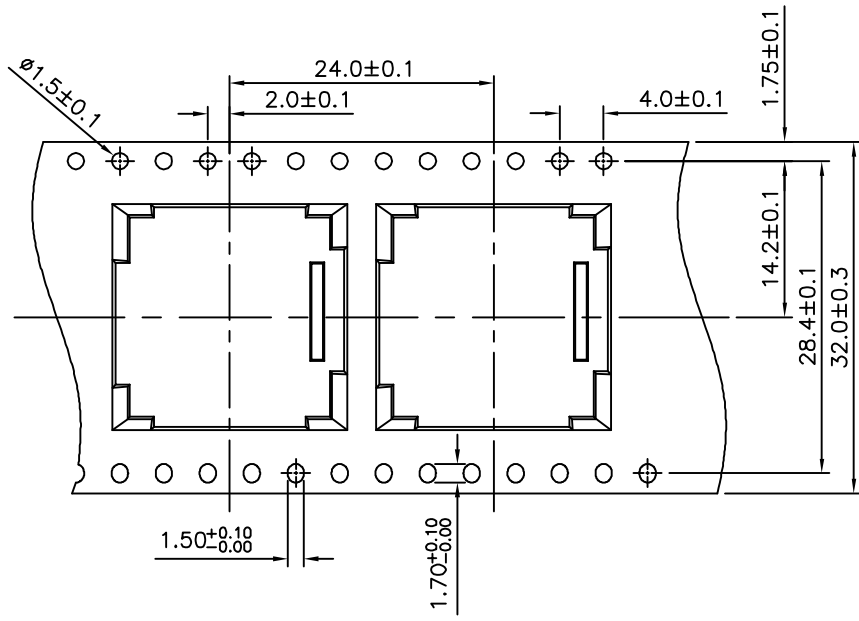
- 1. General Characteristics
 - SIM Card Fixed Cover Double Deck 08P SMT 90° Without Locating Peg Without Switch H=3.0mm
 - Row Pitch=J Type Selective Gold Flash
 - Tape&Reel 700 PCS/Reel
- 2. Material&Finish
 - Housing:LCP(UL94V-0),Black
 - Contact:Phosphor Bronze,Gold Flash On Contact Area,Tin Plated On Solder Tails,Over Nickel
 - Shell::Stainless Steel, Nickel Plated,Gold Flash On Solder Area
- 3. Electrical Characteristics
 - Current Rating:1A
 - Withstanding Voltage:500V AC RMS At 0.5mA, For 1 Minute
 - Contact Resistance:50 Milliohms Max. At 20mV DC
 - Insulation Resistance: 1000 Megaohms Min. At 500V DC
- 4. Mechanical Characteristics
 - Only Per Terminal Forces:30g Min.
 - Displacement:0.45mm
 - Durability:Subjected To 1000 Cycles Of Insertion And Withdrawal(Speed:600±3/Cycles Per Hour)
- 5. Environmental Characteristics
 - Solderability:255°C±5°C For 5±0.5 Seconds, 95% Min. Of Solder Area
- 6. RoHS Compliant

Pin	Assignment	Description
C1	Vcc	Power Voltage
C2	RST	Reset Signal
C3	CLK	Clocking Signal
C4	Reserved	
C5	GND	Power And Signal Ground
C6	Vpp	Programming Voltage
C7	I/O	Serial Data Input/Output
C8	Reserved	

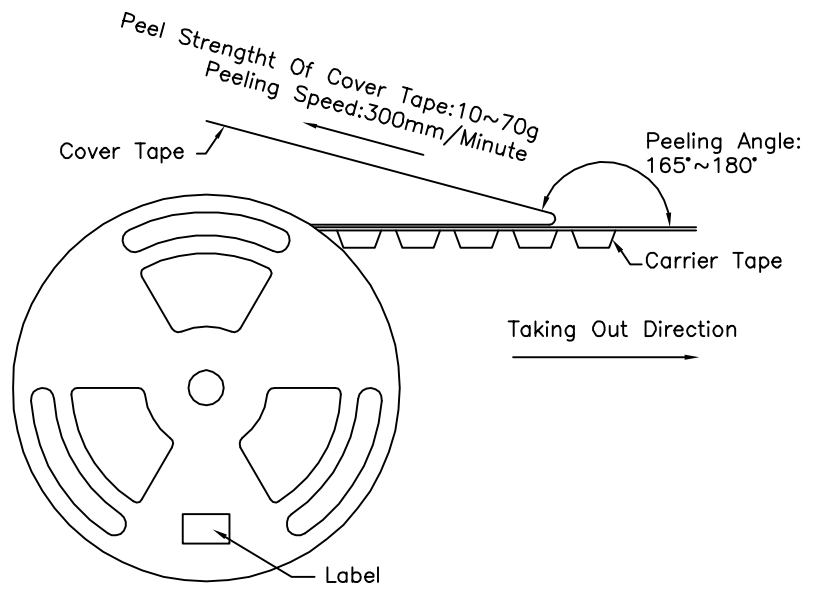
AUK A MEMBER OF AUK GROUP
太聯事業股份有限公司
AUK CONTRACTORS CO., LTD.

CATEGORY		APPROVED BY		UNLESS OTHERWISE SPECIFIED TOLERANCES ARE .X ±0.25 .XX ±0.20 .XXX ±0.10 ANG. ±2°
PART No. SCT2-W08J30-020C-R7H-H		MEI		
DRAWING No. SCT2-W08J30-020C-R7H-H		CHECKED BY HZF		
		DRAWING BY GAO		
SCALE	NONE	REV.	A2	UNIT mm

A2	Modify Data	HZF	05/24/2013
A1	Modify P/N: SCT2-W08H30-020C-R7H-H -->SCT2-W08J30-020C-R7H-H	HZF	09/19/2012
A0	NEW RELEASE	HZF	02/13/2010
NO. REV.	REVISIONS	CHK	DATE



SPECIFICATION
 ▲ Material:PS,Color:Transparent
 Q'ty:700 PCS/Reel
 RoHS Compliant



- ▲ SC T 2 - W 08 J 30 - 020 C - R7H - H
 (1) (2) (3) (4) (5) (6) (7) (8) (9) (10) (11)
- (1) SC:Smart Card/SIM Card
 - (2) T:Fixed Cover
 - (3) 2:Double Deck
 - (4) W:SMT Right Angle
 - (5) 08:No. Of Position
 - (6) J:Row Pitch=J Type
 - (7) 30:Base Height 3.03mm
 - (8) 020:Gold Flash On Contact Area,
Tin Plated On Solder Tails,Over Nickel
 - (9) C:Without Post & Switch
 - (10) R7H:Tape & Reel 700 PCS/Reel
 - (11) H:RoHS Compliant

AUK A MEMBER OF AUK GROUP
太聯事業股份有限公司
AUK CONTRACTORS CO., LTD.

CATEGORY		APPROVED BY		UNLESS OTHERWISE SPECIFIED TOLERANCES ARE X ±0.15 XX ±0.10 XXX ±0.05 XXX ±0.02 ANG. ±2°
PART No. ▲ SCT2-W08J30-020C-R7H-H		MEI		
DRAWING No. SCT2-W08J30-020C-R7H-H		CHECKED BY HZF		
SCALE NONE		DRAWING BY GAO		
REV.	A2	UNIT	mm	7

NO.	REV.	REVISIONS	CHK	DATE
▲A2		Modify Data	HZF	05/24/2013
▲A1		Modify P/N:SCT2-W08H30-020C-R7H-H --->SCT2-W08J30-020C-R7H-H	HZF	09/19/2012
▲A0		NEW RELEASE	HZF	02/13/2010