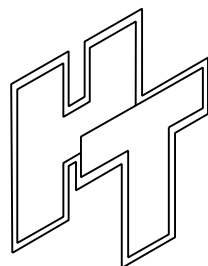
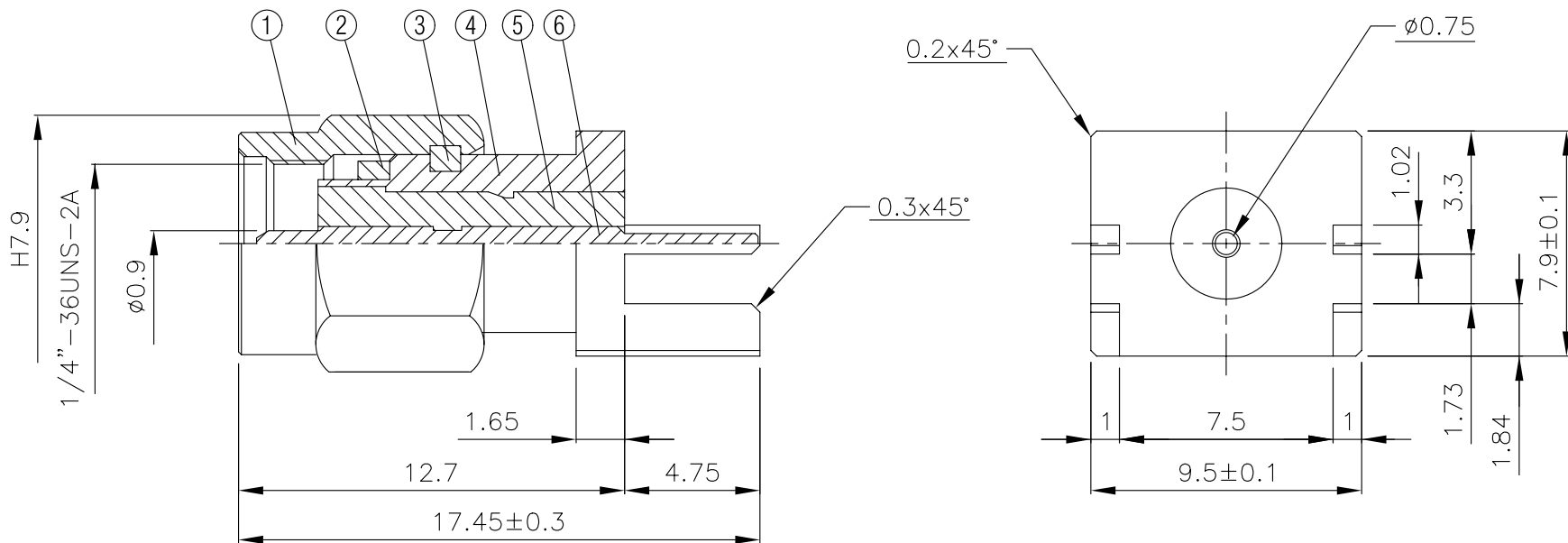
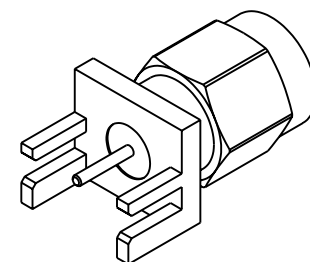


| NO | DESCRIPTION | MATERIAL | Q'TY | FINISH | REMARK |
|----|-------------|-----------|------|--------|-------------|
| 1 | SHELL | BRASS | 1 | NICKEL | B-SMA0043-N |
| 2 | GASKET | SI RUBBER | 1 | RUBBER | RU-0008 |
| 3 | WASHER | PH.BRONZE | 1 | NICKEL | W-0012 |
| 4 | BODY | BRASS | 1 | NICKEL | B-SMA0160-N |
| 5 | INSULATION | TEFLON | 1 | TEFLON | I-0132T |
| 6 | PIN | BRASS | 1 | GOLD | P-SMA0103-G |



HUS-TSAN GROUP CO., LTD.

P.O. BOX 40-76. TAINAN, TAIWAN, R.O.C.

TITLE SMA MALE END LAUNCH
TAB CONTACT (BOARD THICKNESS 1.57)

PART NO. SMA-50V4-TGN

DRAWING NO. SMA 50V4 TGN

DRAWN MARY DATE 96.03.27

CHECKED 蘇姿潔 DATE

Q.A. 馮健華 DATE

APPROVAL 徐燦霖 DATE

REVISION DATE

DIMENSIONS ARE IN MILLIMETERS

UNLESS OTHERWISE SPECIFIED
TOLERANCE

| | |
|------------|----------------|
| 0.5-5=±0.2 | 120-315=±1 |
| 5-30=±0.4 | 315-1000=±1.6 |
| 30-120±0.6 | 1000-2000=±2.4 |

SCALE 4:1 SIZE A

REVISION

| DESCRIPTION | ENGINEER |
|-------------|----------|
| | |
| | |
| | |