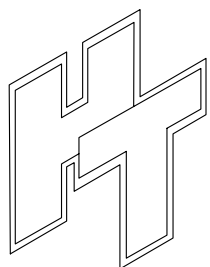
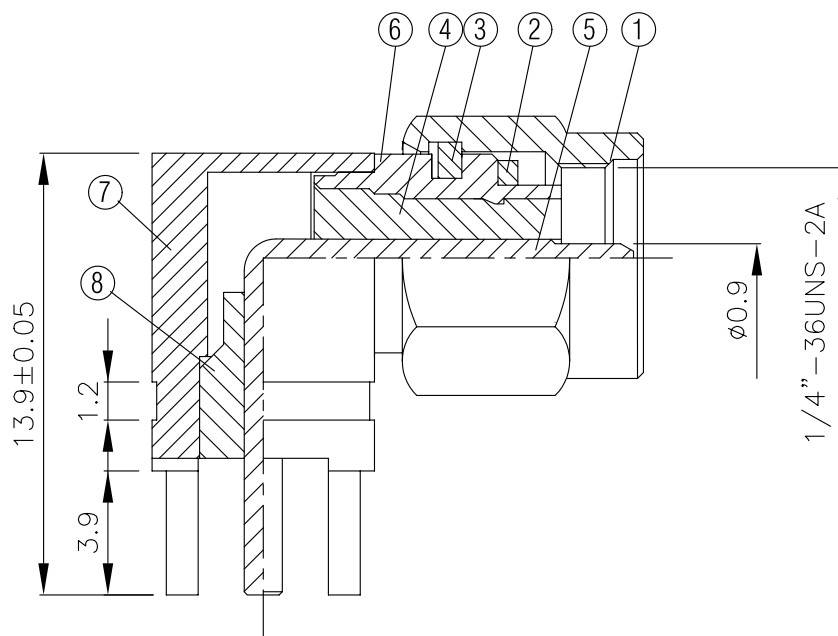
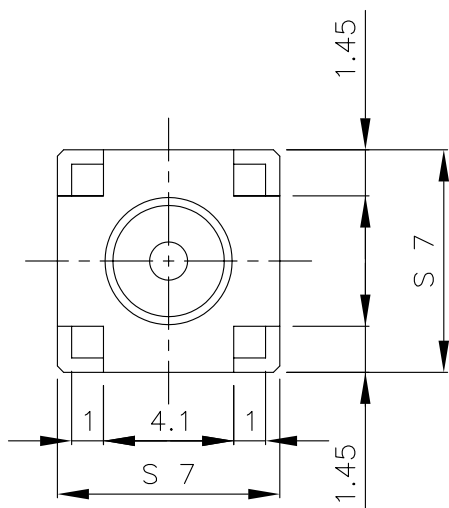
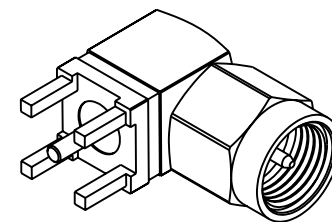
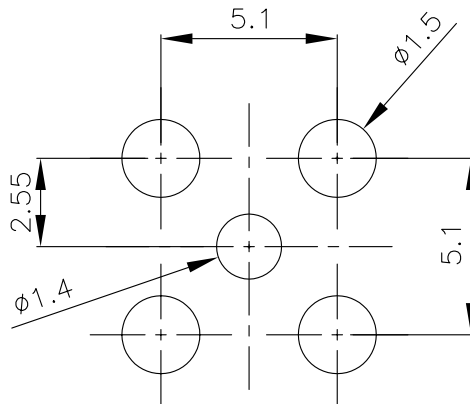


| NO | DESCRIPTION | MATERIAL | Q'TY | FINISH | REMARK |
|----|-------------|-----------|------|--------|-------------|
| 1 | SHELL | BRASS | 1 | NICKEL | B-SMA0043-N |
| 2 | GASKET | SI RUBBER | 1 | RUBBER | RU-0008 |
| 3 | WASHER | BRASS | 1 | NICKEL | W-0012 |
| 4 | INSULATION | TEFLON | 1 | TEFLON | I-0138T |
| 5 | PIN | BRASS | 1 | GOLD | P-SMA0050-G |
| 6 | BODY | BRASS | 1 | NICKEL | B-SMA0154-N |
| 7 | BODY | BRASS | 1 | NICKEL | B-SMA0066-N |
| 8 | INSULATION | TEFLON | 1 | TEFLON | I-0127T |



HUS-TSAN GROUP CO., LTD.

P.O. BOX 40-76.TAINAN.TAIWAN,R.O.C.

TITLE SMA MALE ANGLE MOUNT

PART NO. SMA-49-TGN

DRAWING NO. SMA 49 TGN

DRAWN MARY DATE 96.03.15

CHECKED 蘇姿潔 DATE

Q.A. 馮健華 DATE

APPROVAL 徐燦霖 DATE

REVISION DATE

DIMENSIONS ARE IN MILLIMETERS

UNLESS OTHERWISE SPECIFIED TOLERANCE

0.5-5=±0.2 120-315=±1
5-30=±0.4 315-1000=±1.6
30-120±0.6 1000-2000=±2.4

SCALE 4:1 SIZE A

REVISION

| DESCRIPTION | ENGINEER |
|-------------|----------|
| | |
| | |
| | |